



KOREA NATIONAL UNIVERSITY OF TRANSPORTATION

Together Get Better



KOREA NATIONAL
UNIVERSITY OF TRANSPORTATION

Connect the world

Table of Contents

01 History

University History

02 Status

Status of KNUT

03 Capabilities and Strengths

Capabilities and Strengths of KNUT



The only national university
specialized transportation area in Korea

Connect the world

Korea National University of Transportation

01

University **History**





1914.04

Cheongju Jahye Clinic's midwife & nurse training school installed and accredited.



1993.03

Opened Chungju Industrial University.

1999.03

Changed to Chungju University.

1982.02

Chongju National Technical College established and accredited.

1999.03

Changed to Chongju National College



2006.03

Integrated Chungju University and Chongju National College



2018.07

Selected as a university subject to the National College Fostering Project.

2019.02

Education Quality Assurance System.

1905

Start of History

**1905.05**

Opened Iwon Railroad Training School.

1914

1962

Cradle of the University

**1967.03**

Changed to Railroad High School.

1999.03

Changed to Korea National Railroad College.

2006

Start of the Integration

2012.03

Integrated Chungju University and Korea National Railroad College.

2012.03

Launched as Korea National University of Transportation.

2012

2020.09

Selected as a university subject to The Leaders in Industry-University Cooperation Project

2023

Together, for a Better Future!

**2023.04**

Inauguration of the 8th President Yoon Seung-Jo.

2023.06

Selected as the 2nd Cycle Lifelong Education system support Project. (LIFE2.0)

2023.06

Short-listed in preliminary university list for the Glocal University 30 Projects.

BEST

An education- innovating university of the future
industry-customized convergence talent cultivation
is the development objective of KNUT.

Connect the world

Korea National University of Transportation

02

Status of **KNUT**



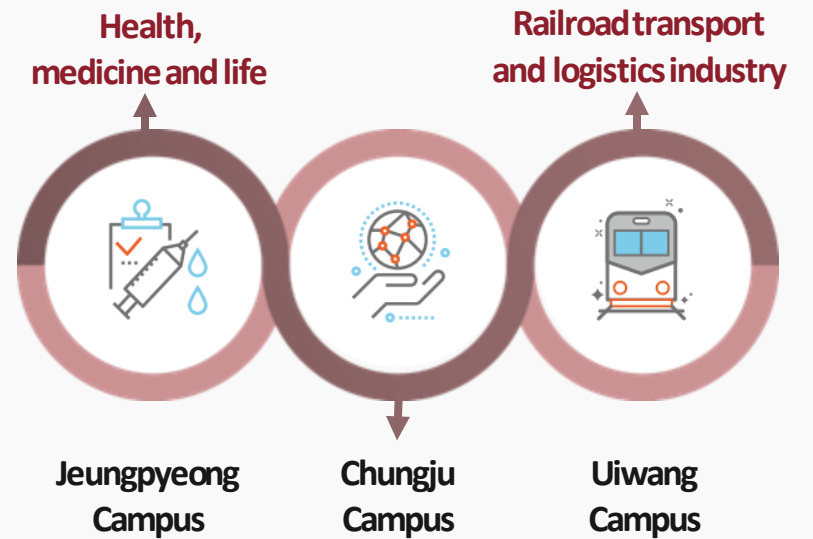
Location of KNUT



Academic Structure (3campuses)



Build-up of a 3multi-campus,
a specialized cluster by region.



Smart vehicle & aviation
Next-generation energy, parts material & IT technology
Social infrastructure, construction & environment
Humanities, sports & arts

Academic Structure (6 Colleges +)

6 Colleges +

College of Convergence Technology (Chungju)

Dept. of Mechanical Engineering
 Dept. of Automotive Engineering
 Dept. of Aeronautical & Mechanical Design Engineering
 Dept. of Electronic Engineering
 Dept. of Electrical Engineering
 Dept. of Computer Engineering
 Dept. of Software

College of Railroad Sciences (Uiwang)

Dept. of Railroad management and logistics
 Dept. of AI Data Engineering
 Dept. of Railroad Operation Systems Engineering
 Dept. of Railway Vehicle System Engineering
 Dept. of Railroad Infrastructure System Engineering
 Dept. of Railroad Electrical & Electronic Engineering

College of Engineering (Chungju)

Dept. of Civil Engineering
 Dept. of Environmental Engineering
 Dept. of Urban & Transportation Engineering
 Dept. of Chemical and Biological Engineering
 Dept. of Material Science and Engineering
 Dept. of Polymer science & Engineering
 Dept. of Industrial & Management Engineering
 Dept. of Safety Engineering
 Dept. of Architectural Engineering
 Dept. of Architecture
 Dept. of Industrial Design
 Dept. of Communication Design

College of Humanities and Social Sciences (Chungju)

Dept. of English Language and Literature
 Dept. of Chinese
 Dept. of Korean Language and Literature
 Dept. of Public Administration
 Dept. of Public Management & Information System
 Dept. of Business Administration
 Dept. of Business Convergence Management
 Dept. of International Business & Commerce
 Dept. of Social Welfare
 Dept. of Music
 Dept. of Sports & Health Care
 Dept. of Sport Industry
 Dept. of Airline Service
 Dept. of Aeronautical Science & Flight Operation
 Dept. of Early Childhood Education

+School of Liberal Studies

+School of Liberal Arts and Sciences

College of Health and Life Science (Jeongpyeong)

Dept. of Nursing
 Dept. of Food Science & Technology
 Dept. of Food and Nutrition
 Dept. of Biotechnology
 Dept. of Physical Therapy
 Dept. of Emergency Medical Service
 Dept. of Early Childhood Special Education

College of Future Convergence (Chungju)

Dept. of Smart Electrical Energy Engineering
 Dept. of Civil and Environmental Convergence Engineering
 Dept. of Sport Welfare
 Dept. of Welfare and Management

Academic Structure (Student & Faculty)



Chungju Campus

- College of Convergence Technology (5 Dept.)
- College of Engineering (15 Dept.)
- College of Humanities and Social Sciences (16 Dept.)



Jeungpyeong Campus

- College of Health and Life Science (7 Dept.)



Uiwang Campus

- College of Railroad Sciences (6 Dept.)

Three region-specific multi-campuses



of Faculty : **283**



of Student : **12,238**

Connect the world

Korea National University of Transportation

03

Capabilities and
Strengths of **KNUT**



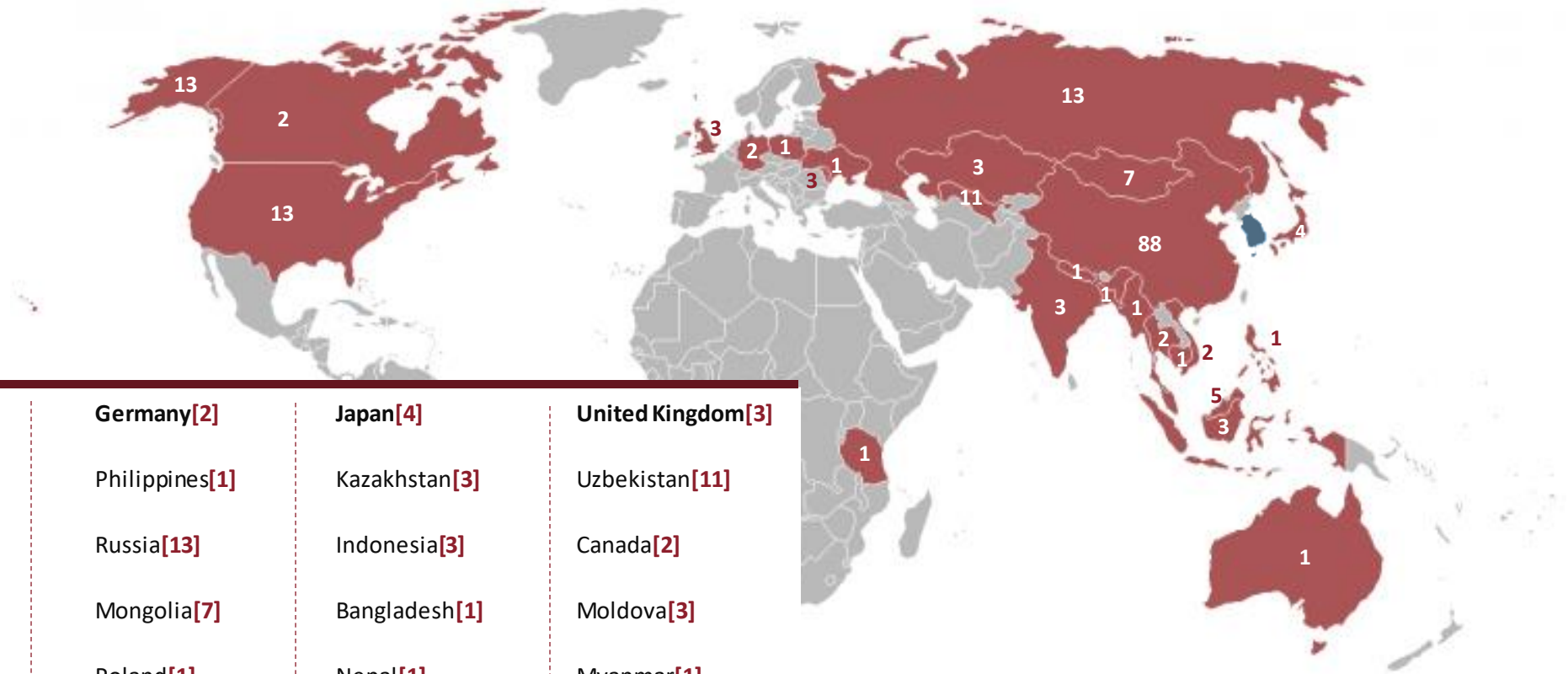
Various Projects in KNUT (Present)

Currently, **352** research projects (total research amount: **39.03 M USD**)

Research Project	Contents
National university supporting project	<ul style="list-style-type: none"> • Period: 2023. 3. 1. ~ 2024. 2. 29. • Funding amount: 5.63 M USD • Financial Support: Korean Government • Purpose : To establish a student-centered educational model that connects with the community and society
Linc 3.0 (Leaders in Industry-university Cooperation)	<ul style="list-style-type: none"> • Period : 2022 ~2027 years • Funding amount: 18.37 M USD • Financial Support: Korean Government • Purpose : To develop leading universities for industry-academic cooperation
RIS (Regional Innovation System)	<ul style="list-style-type: none"> • Period : 2020. 8. ~ 2024. 2. • Funding amount: 164.41 M USD • Financial Support: Korean Government • Purpose : To establish a regional innovation system based on cooperation among local governments and universities and innovation among universities and regions.
LIFE (Lifelong education at universities for the Future of Education)	<ul style="list-style-type: none"> • Period : 2019. 1. ~ 2025. 5. • Funding amount: 7.25 M USD • Financial Support: Korean Government • Purpose : To support development and operation of extension colleges in universities

Exchanges with 173 Overseas Institutions

MOU+



A background image showing a view through a large airport terminal window. Outside, a tarmac is visible with a white airplane on the left, a red ground support vehicle on the right, and other airport buildings in the distance. The window has a grid of vertical and horizontal frames.

THANK YOU

Together Get Better