

TOWARDS A GREENER AND SMARTER TRANSPORT NETWORK:

Leveraging Seoul's Experiences with the World Bank

Eunhee Roh

Team Leader

Seoul Urban Solutions Agency



SEOUL MY SOUL
서울마이소울

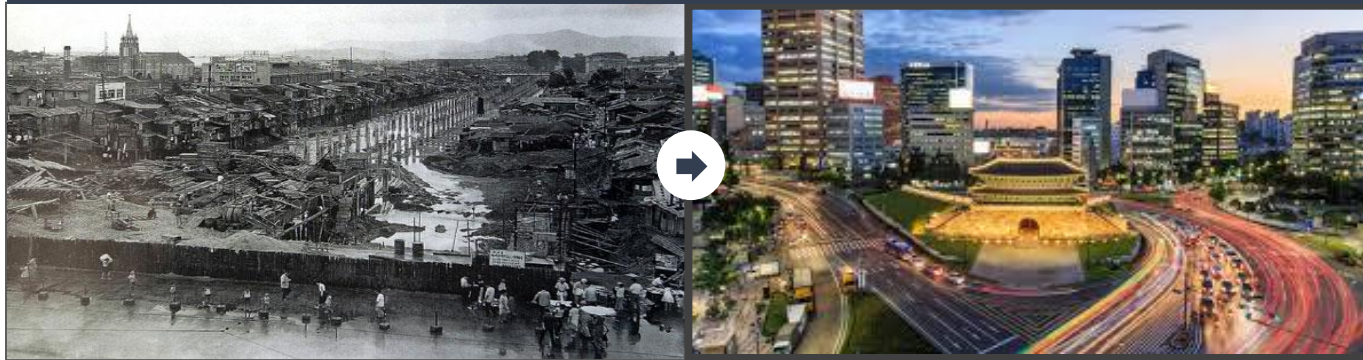


KGID
CAIRO

Seoul's Policy Sharing Initiative

- The urban problems experienced by Seoul and the process of coping with them will be benchmarked.
- Experience in efficiently addressing urban issues with constrained resources, encompassing policy formulation, technology application, governance systems, financing and public-private partnership
- Increased demand for knowledge exchange on urban management (104 projects in 40+ countries, as of Oct. 2023)

Seoul's Journey from ruins in the 1950s to a smart metropolis



Seoul Digital Media City (DMC) (2003-2005)

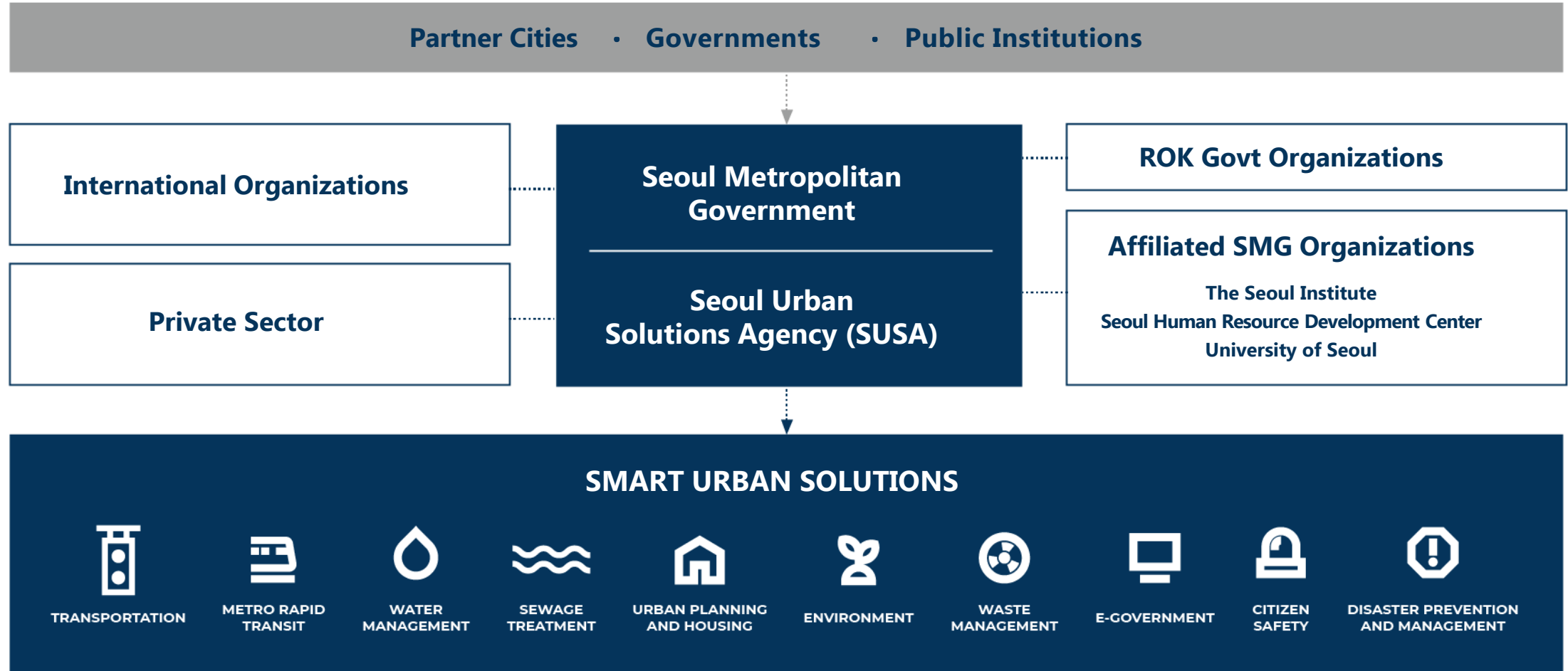


Seoul's Cooperation Records



Seoul Urban Solutions Agency

A dedicated institution for international development cooperation of Seoul



SUSA as an agent in delivering the integrated solution

**CITY'S URBAN
DEVELOPMENT NEEDS**

PUBLIC SECTOR CAPABILITIES

BUSINESS SOLUTIONS

INTEGRATED SOLUTIONS

POLICY PACKAGE

HARDWARE SOLUTIONS

SOFTWARE SOLUTIONS

EXPERTISE TRANSFER

SERVICES

WE PROVIDE



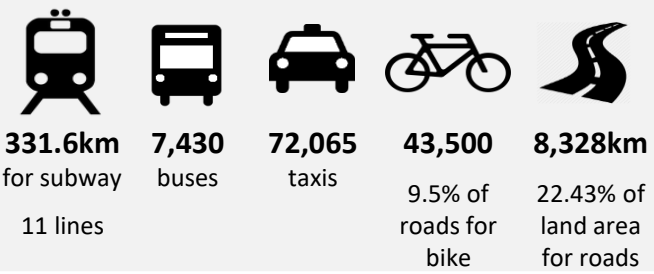
- POLICY ADVISORY / TECHNICAL ASSISTANCE
- PROJECT IDENTIFICATION, PREPARATION, RESOURCE MOBILIZATION & IMPLEMENTATION
- O&M SUPPORT



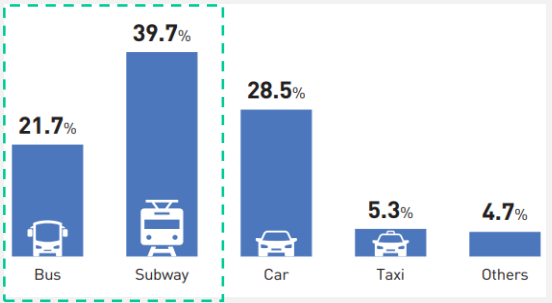
- STUDY VISITS
- KNOWLEDGE EXCHANGE
- CAPACITY BUILDING

SEOUL: Transit-Oriented City

Public transportations and roads in Seoul



Seamless Integration: Transfer Center connects various transportations in one place

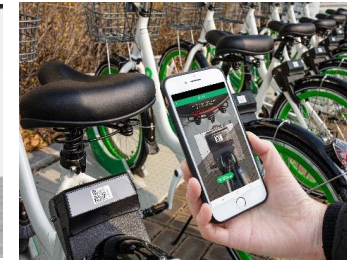
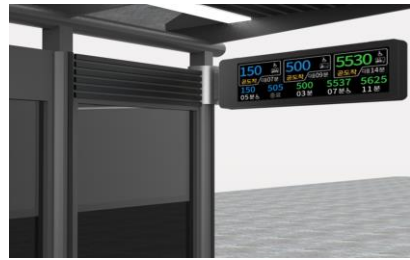


Public Transit Mode Share: 61.4%

Daily Transit Passengers : 8.5million



Smart shelter



2004 REFORM : INTEGRATING PUBLIC TRANSIT



BUS SERVICE REFORM

- Quasi-Public Management
- Exclusive Median Bus Lanes
- Restructuring Bus Routes



INTEGRATED FARE SYSTEM

- Distance-based transit fare
- Free inter-modal transfer
- Discount for T-Money card



TRANSFER CENTERS

- Integrates different modes of public transport for easy and speedy transfer

IMPACT



4.6%
ON-TIME ARRIVAL



9.4%
BUS RIDERSHIP

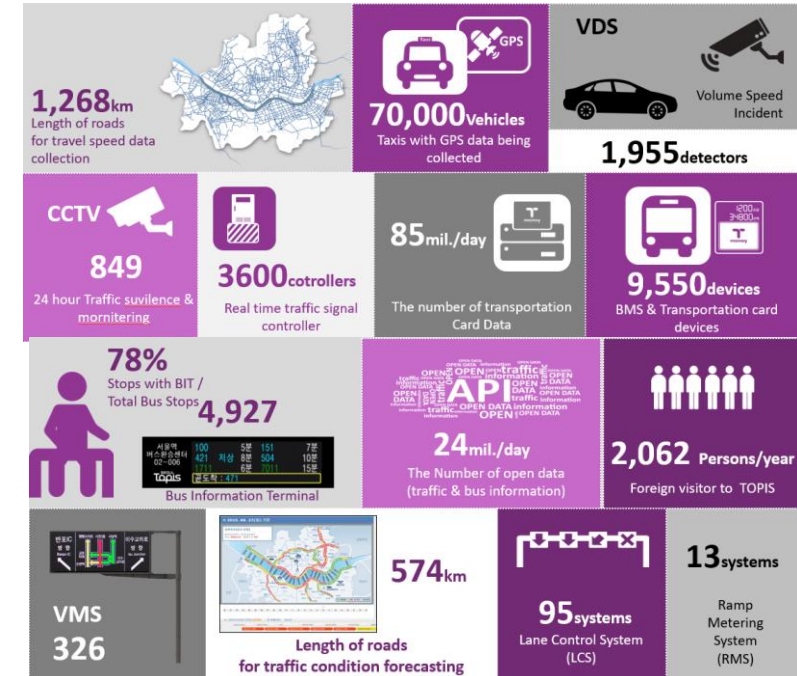
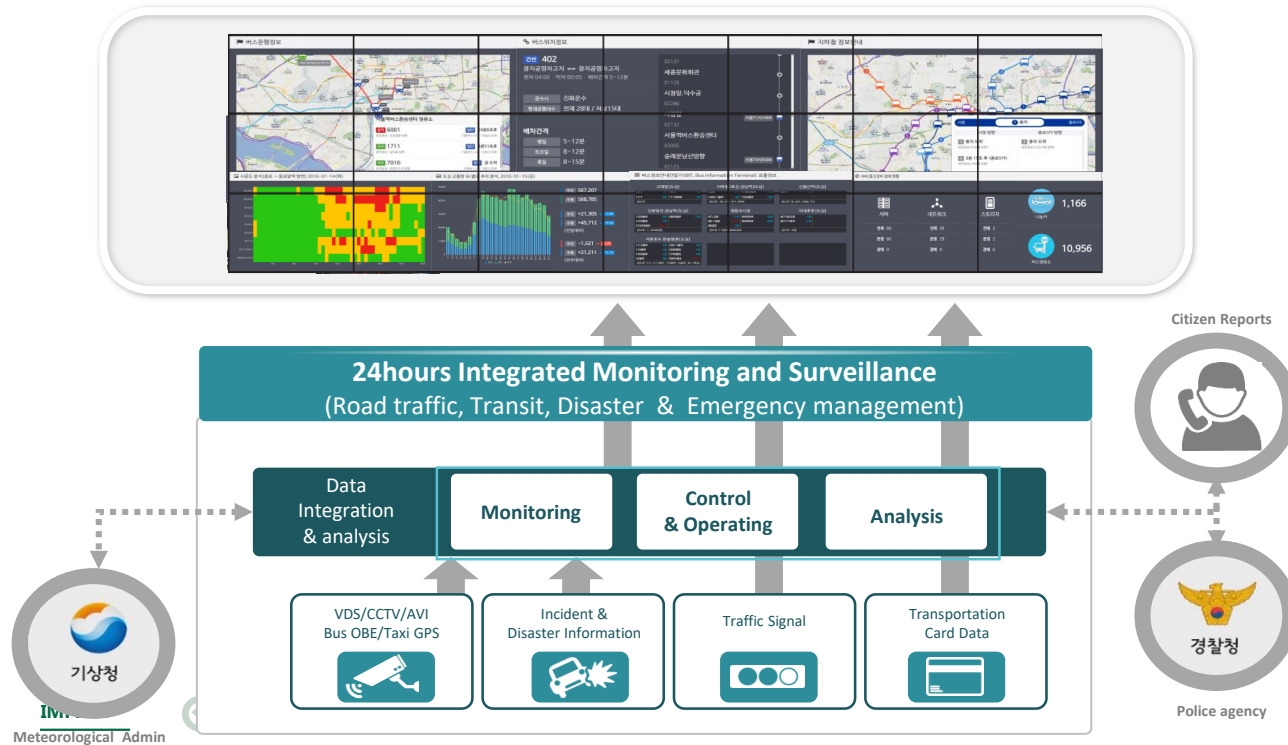


32%
SERVICE SATISFACTION

680,000

AVERAGE DAILY PASSENGER
3.99M (2004) > 4.7M (2005)

TOPIS Comprehensive Urban Transportation Management Platform

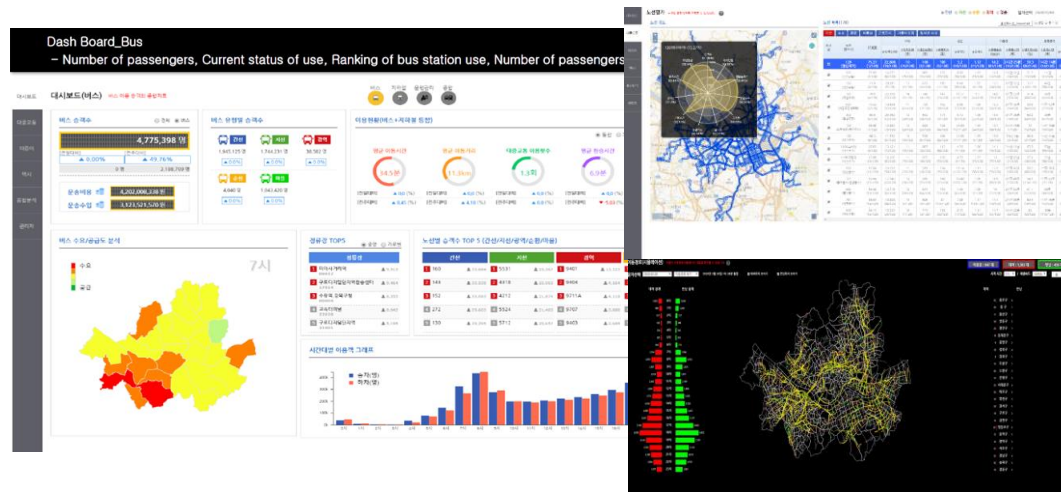


Integrated Management : Enables real-time management of Seoul's transport network operation as a whole.

- ✓ **Open Data** : TOPIS information is made 100% open to public, enhancing trust & facilitating innovations.
- ✓ **Cost-Effective** : Intelligent and automated modular systems enhances cost/time effectiveness in transport operations and systems maintenance.

DATA-DRIVEN POLICY PLANNING

USING BIG DATA ANALYSIS FOR BUS ROUTE PLANNING & INTERVAL PLANNING

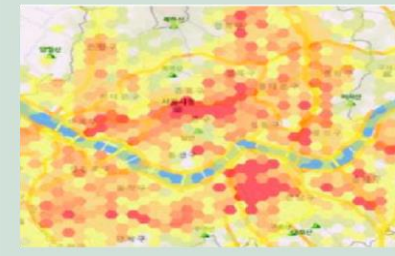


- 85 million traffic card data and 26 million transport operations data generated on a daily basis are leveraged to enable accurate and real time analysis for transportation planning, such as route rationalization, interval planning, forecasting, and simulation.
- In addition to public data, partnership with a private network operator grants access to billions of anonymized call logs to better understand how citizens move.

IMPACT



Demand-Responsive : Big data analysis enables user-centric policy design that is responsive to the real and dynamically changing needs of citizens, as well as providing an effective and economic alternative to traditional methodologies. I.E. Seoul's 9 Night Owl Bus routes, having served over 10 million cumulative trips, were designed through big data analysis.



MULTI-DIMENSIONAL INITIATIVES FOR SUSTAINABLE ROAD TRAFFIC

ELECTRIC VEHICLES

- 1,039 EV buses, FECV 27, 5,565 EV Taxis
- Various subsidies & incentives for EV
- Installing smart EV charging stations

SHARED MOBILITY

- 2012 'Sharing City, Seoul' declaration
- City-run car-sharing service
- Public share bikes, 'Ttareungyi'

1 x  = 8.5 ↓
Shared car = passenger cars

LESS DRIVING, LESS EMISSION

- Low Emission Zone & Green Transportation Area
- Weekly No-Driving Day & Driving Mileage
- 'Road diet' for more pedestrian-friendly space



IMPACT

- ✓ **Real Reduction** : 3 million tons of CO₂ and 792,000 TOE - 16% reduction in transport energy consumption ²⁰⁰⁸⁻²⁰¹⁷
- ✓ **Catalyst for Change** : SMG's initiatives in EV and shared mobility have led to a rise in private services in sustainable mobility.
- ✓ **Intelligent Planning** : Data-based design optimizes infrastructure installation (charging stations, shared bike docks, etc.)

Safe, Inclusive and Sustainable Transportation System

KGID
CAIRO

Better Air Quality (AQ) & Ventilation

SMART AQ Management System



840 air quality sensors at 277 stations



Optimal ventilation based on big data analysis

Green Transport Zone

Access control for Class-5 emission vehicles



Green Instant Payment System



Automatic payment using IoT and automatic license plate recognition: parking, tunnel, congestion charge

Barrier-Free Transportation



Install elevators in all subway stations by 2022



Replace all intra-city buses with low floor vehicles by 2025



Low-Floor Bus Reservation Service



Available for passengers with special needs to board at the bus stop of their choice.

Climate Card



Unlimited transit for \$50 a month



Connected Public Transport



V2V, V2I, V2P, V2X ...

Traffic Safety Service



Innovative Solutions for Urban Mobility in Almaty and Tashkent (2021-23)

Project to support Almaty and Tashkent by bringing international experience in smart solutions to tackle urban mobility issues mainly congestion and transport emissions.

CHALLENGES & ISSUES

➤ Traffic Congestion

- Increasing car ownership
- Old car issues



Congestion in Tashkent

➤ Air Pollution

- Air quality decreasing
- Traffic congestion's influence



Pollution in Tashkent

➤ Disasters (Flooding, Heavy Snow, Pandemic)

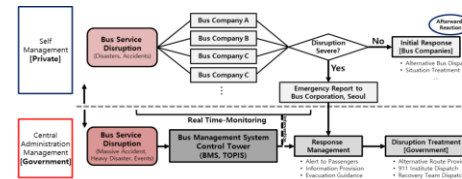
- Flooding caused by heavy rains, melting Snow
- Annual heavy snow issues
- Abnormal climate situations
- Response to COVID-19



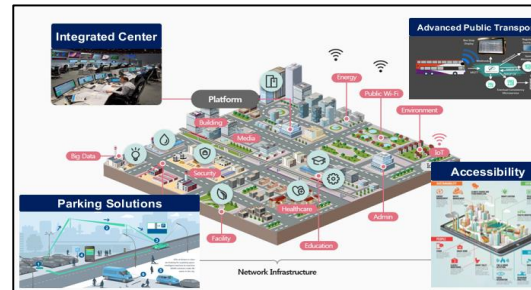
T/A, CONSULTING

1) Enhancing Public Transport Resilience

Operational Procedures in Case of Disruptions



2) Smart City Solutions (Mobility Management)



3) Capacity Building



Potential Investment Projects

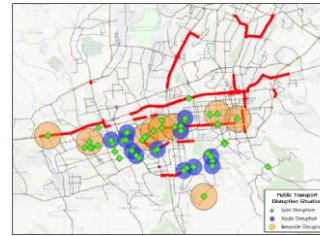
- Advanced Traffic Management System
- Integrated Data Platform
- Mobility Hub
- Low Emission Zone, etc.

SMART SOLUTIONS FOR ALMATY AND TASHKENT

ALMATY

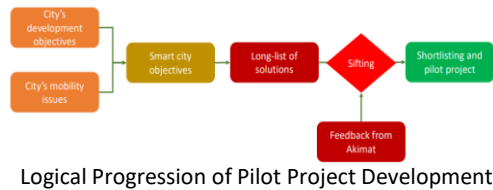
Enhancing Public Transport Resilience

- **Public Transport:** Increasing Car ownership, Lack of Public Transport Coverage, ride comfort
- **Adoption of Green transport:** Lack of e-vehicle charging infrastructure
- **Congestion:** Need for improved traffic signal and road marking
- **Illegal parking along the roads**
- **Disruptions** caused by heavy rainfall and flooding



Almaty public transport risk exposure analysis result

Smart City Solutions



Logical Progression of Pilot Project Development

- ① Traffic Management Zone
- ② Smart bus priority measure
- ③ Mobility centre
- ④ Incident detection system
- ⑤ **Smart transit hub**

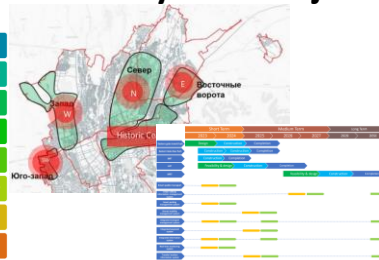
"The Eastern Gateway Pilot Project"



Case Studies: Yeouido, Seoul

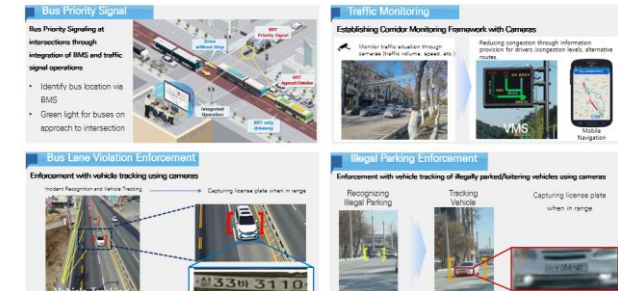
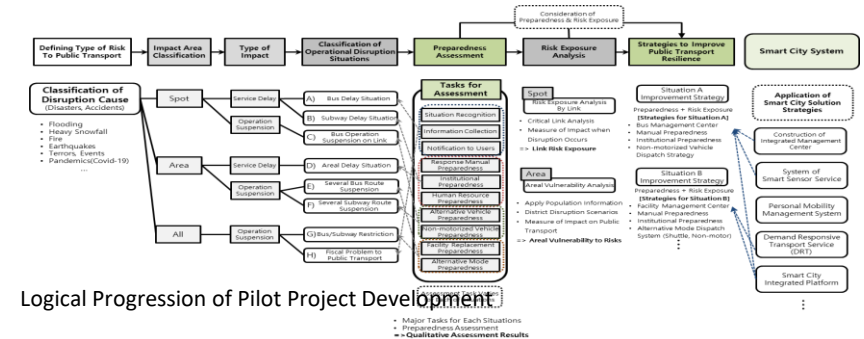


Functional Outline



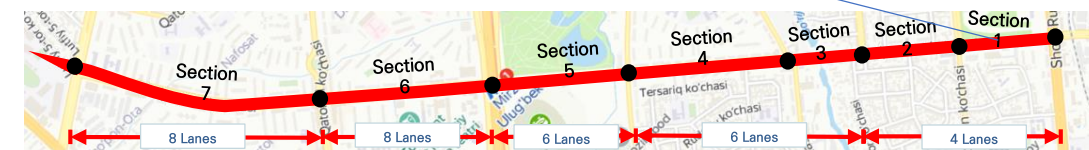
Smart Transit Hub Action Plan

TASHKENT



Services to improve public transport efficiency

"Improvement of BRT connection and customer service"



Bus Priority Signals, BIS, Bus lane violation enforcement, illegal parking enforcement, Smart Bus Stop, etc.

Pilot Project

WORLD BANK – SEOUL COLLABORATION

PAST COLLABORATIONS IN TRANSPORT SECTOR

BIG DATA

Solutions for Development
Knowledge Sharing Series on
Innovation for Development

World Bank – Seoul
Big Data Solutions for
Development Conference

World Bank-SEOUL KNOWLEDGE
EXCHANGE WORKSHOP AND
FEASIBILITY STUDY MEETING ON
TRANSPORT POLICY AND BIG DATA
SOLUTIONS



Smart City and Traffic
Management for Kiev,
Ukraine



Informing climate-smart and
safe traffic management
and sustainable transport
interventions in Lima, Peru

PROPOSED COLLABORATION GOING FORWARD

KNOWLEDGE SHARING

- City-to-city based knowledge exchange & collaboration
- Joint knowledge events
- Case study documentation

PROJECT IDENTIFICATION

- Facilitating coordination between WBG, Korean Gov't, client cities for resource mobilization
- Project concept origination (based on C2C cooperation)
- Pre F/S

PROJECT PREPARATION

- Delivery of targeted TA & policy advisory
- Masterplanning, FS, design support
- Capacity building & institutional strengthening

PROJECT IMPLEMENTATION

- Troubleshooting and Just-in-Time TA
- Policy & technical expert dispatch
- Continued capacity building support
- Stakeholder coordination support

O&M SUPPORT

- Continued advisory support
- Facilitate continued knowledge exchange with city networks and SMG



KOREA GREEN INNOVATION DAYS

KGID CAIRO