

Global Knowledge Dissemination by Leveraging Korea's Experiences

Dong Soo Kang

Executive Director

Global Knowledge Exchange and Development Center

Korea Development Institute



KGID CAIRO

Introduction



Ministry of Economy
and Finance



GKEDcenter
Global Knowledge Exchange & Development Center

by **KDI**

Korea Development
Institute

GKEDC's Interests

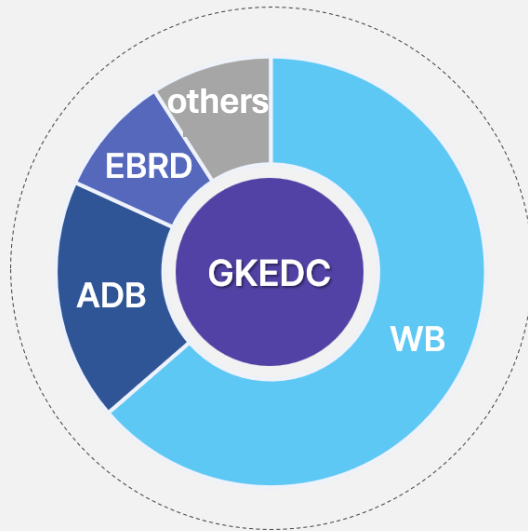


Inputs from KDI

- Established in **1971**
- Involved in **Policymaking** throughout Korea's development trajectory
- **Data-driven & Evidence-based** Policy Research covering **Comprehensive Research Areas**

What We Did

Our Partners



**15 ~ 20 Projects
with MDBs
in a year**

Selected Projects with MDBs and G2G

#	Sectors	Title
1	Agriculture	• Seminar on Economic Cooperation for Africa's Agricultural Productivity between the Republic of Korea and African Countries (23.08.22.)
2	Environment/Energy/ Agriculture	• WBG-KDI GKEDC Launch Event for the Report "Detox Development: Repurposing Environmentally Harmful Subsidies" (23.05.11.~12.)
3	Digital Development /Climate Change	• ADBI-KDI GKEDC Joint Seminar: Digital, Climate, and Resilience (23.05.04)
4	Water/Urban/ Environment	• WBG KGGTF-KDI GKEDC Knowledge Exchange Kick-off Seminar (22.11.28.)
5	Climate Change	• The 8 th Seminar on Climate Change Projects and Programs (22.12.21)
6	Energy	• WBG EAP Energy Transition Conference 2022 Program (22.12.13.~15.)
7	Water	• GKEDC Sectoral Capacity Building Program: Water
8	Digital Development	• KDI GKEDC-WB Capacity Building Program in Korea: Strengthening Digital Skills in EAP (23.11.)
9	Environment	• WBG OLC-KPOK Knowledge Exchange on Transition to Circular Economy (23.10.23.~27.)
10	Agriculture	• GKEDC-EBRD Blended Learning Program: Smart Farming in Korea (23/24)

Case 1. WBG-KDI GKEDC : Launch Event for the Report



- Date: May 11, 2023 (KST), 09:30-15:30
- Venue: Main Auditorium of GKEDC
- Host: WB and KDI GKEDC

Overview

WB's new report
"Detox Development: Repurposing
Environmentally Harmful Subsidies"

Co-hosted the launch event for the
report *using KDI's expert network
and knowledge-sharing know-how*

Venue & Facilities

In-kind support for *the main
auditorium* (Rose of Sharon Hall)
at GKEDC



Expert Network

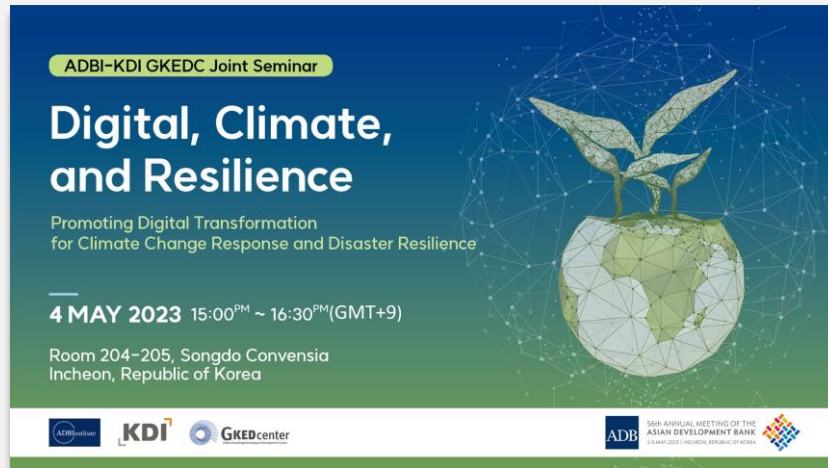
*Invited five (5) Korean experts
from various institutions,*
including KDI, KDIS, KREI, SNU, and
KHU



Seminar Logistics

Managed overall logistics,
such as participant invitations,
seminar operations, progress
monitoring, communication
between partners, etc.





Case 2. ADBI-KDI GKEDC Joint Seminar : Digital, Climate, and Resilience

- Date: May 4, 2023 (KST), 15:00-17:00
- Venue: Incheon (Songdo Convensia, Room 204-205)
- Host: ADBI and KDI GKEDC

Overview

Side Event of ADB's 57th Annual Meeting held in Incheon, South Korea

Co-hosted the event, on the topic of **digital transformation for climate change response and disaster resilience**

Expert Network

Invited seven (7) international experts from various institutions, including KDI, ADBI, UNESCAP, SNU, WB, GCF, and the government.



Seminar Logistics

Managed overall logistics, such as participant invitations, seminar operations, progress monitoring, communication between partners, etc.



Case 3. GKEDC One-Week Capacity Building Programs

PROGRAM MODULE

(ex) Edu-tech

DAY 1	DAY 2	DAY 3	DAY 4	DAY 5
Framing Session	Digital Skills Infrastructure	Digital Skills Policy	Digital Skills Training	Wrap-up Session
Opening Ceremony	Thematic Session (A)	Thematic Session (C)	Thematic Session (E)	Action Plan Presentation
Keynote Presentation	Site Visit (A)	Site Visit (C)	Site Visit (E)	
GKEDC Exhibition Tour	Thematic Session (B)	Thematic Session (D)	Action Plan Building Workshop	Closing Remarks
Country Report	Site Visit (B)	Site Visit (D)		Cultural Tour

with Experts & Practitioners

GKEDC Exhibition Tour



Interactive Lecture & Seminar



Site Visit



Action Plan Session



Future Engagement Opportunities

***KDI's Business Portfolio covers
every stage of Knowledge Sharing***



Creation

- Research
 - Empirical Data Analysis
 - Case Study

Management

- Research Application
- Policy Dialogue Committee
- Policy-making Task Force
- Feasibility Study

Dissemination

- *Capacity-building Program*
- *Knowledge-sharing Seminar*
- Policy-consultation
- Workshop
- Education (KDI School)



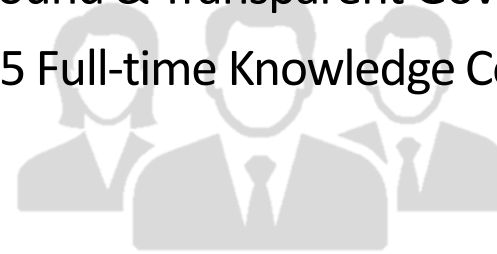
Why GKEDC is the Best Partner for You

KDI'S RESOURCES

- Internationally Renowned Brand
- Accumulated Knowledge
- 132 Full-time Internal Researchers
- Expert Network

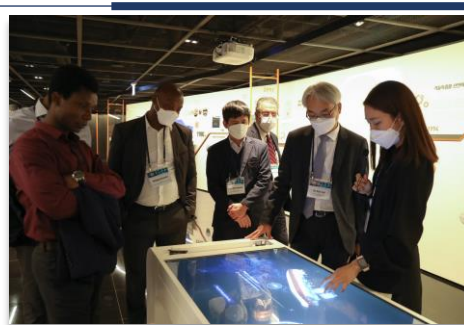
SYSTEMIC MANAGEMENT

- Sound & Transparent Governance
- 25 Full-time Knowledge Coordinator



EXHIBITIONS

- Bird-eye view of Korea's socioeconomic development



VENUE & FACILITIES

- Located in Seoul
- Various types of education rooms





Thank You.

Contact Information

jisun@kdi.re.kr

KGID CAIRO