

## General Induction for Construction Workers: Safety, Health and the Environment

### Quiz

Name:

Date:

#### Section 1: Essential things to do

#### Module 2: Before you start work

1. Who is responsible for looking after health, safety and the environment on site? Tick all that you think are right.

- a. Me
- b. Other workers
- c. My supervisor
- d. Site Manager

2. Draw a circle around the Personal Protective Equipment PPE you must always wear on site.



Hard hat



Gloves



Safety boots



High visibility  
vest

**3. Another worker asks you to operate the excavator for them while they have a break.**

You have not had special training in how to operate an excavator safely. What do you do?



- a. Say “Sorry I can’t do that because I’ve not had special training”.
- b. Realise that you haven’t had special training but do it anyway.
- c. Just do it because I can do any job on site.

**4. What do these signs mean?**

Draw a line between each sign and what it means.

First aid



Don't walk or stand here

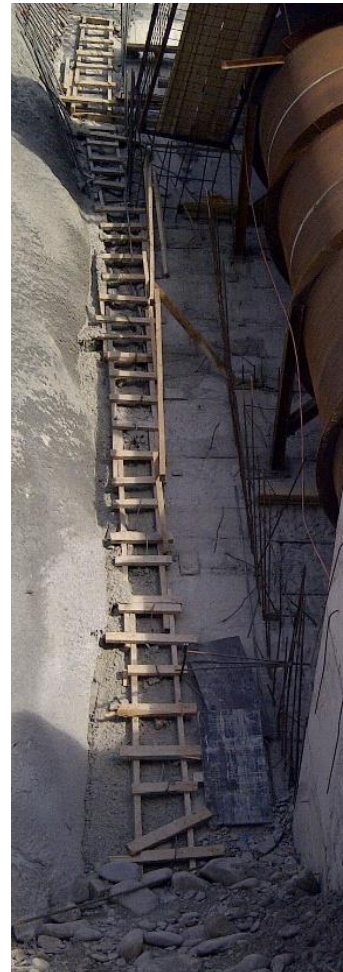


Risk of falling



5. You see this ladder on site. What do you do? Tick all that you think are right.

- a. Nothing because I don't need to go up it.
- b. Tell my supervisor because it's unsafe.
- c. Report it following the site system for raising unsafe issues.



## Section 1: Essential things to do

### Module 3: Avoiding hazards and risks

6. You see this area taped off on site: what do you do?

- a. Keep out.
- b. Sneak in when no one is looking.
- c. Go in anyway.



7. You are walking on site and see this:  
What do you do?



- a. Keep walking underneath it.
- b. Stop and stand back away from the load and the machine.
- c. Have a chat with the operator as he's your friend.



8. You are cutting down trees to clear the site and find birds' nests in this one. What do you do?



- a. Stop work and tell my supervisor – we cannot cut down trees with nests in.
- b. Cut the tree down and try to rescue the eggs or birds.
- c. Cut the tree down.

9. Tick the vehicle or machine that it is the safest to be a passenger in.

a.



b.



c.



**10. What extra Personal Protective Equipment do you need to wear?  
Draw a line between the task and the PPE you need.**

When it's dusty



Ear defenders or ear plugs

When it's noisy



Harness and lanyard

Working at height



Leather gloves

Lifting by hand

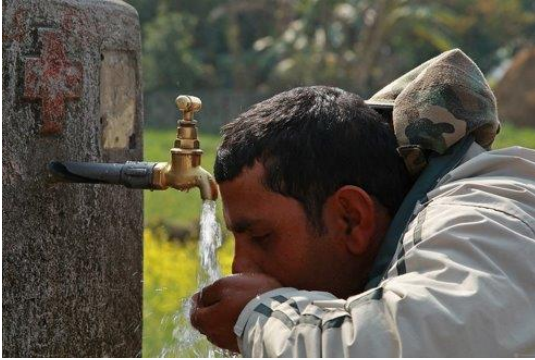


Dust mask

## Section 1: Essential things to do

### Module 4: Staying healthy

11. Tick ALL the things you should do to stay healthy on site.



Drink water



Take breaks



Use the waste bins



Wash your hands after using the toilet

12. What do you need to do if you have a cut or wound? Tick all that you think are right.

- a. Cover it with a dressing like this:
- b. Leave it uncovered so the air helps it heal.
- c. Check it for infection every day.





13. Tick the health issues that you need to tell your supervisor about. Tick all that you think are right

 <p><input type="checkbox"/> Medication that might make you drowsy</p>	 <p><input type="checkbox"/> Pests like rats on site</p>
 <p><input type="checkbox"/> If you are ill with a disease that can be passed on to other people</p>	 <p><input type="checkbox"/> If you had a beer last night</p>

14. Draw a circle around ALL the things you should do if you are working in the sun all day.



a. Drink water



b. Wear sunscreen



c. Wear long clothes



## Section 1: Essential things to do

### Module 5: Keeping the community safe

15. What can you do to protect the community from falling into this hole?  
Tick all that you think are right.



- a. Put the blocks back that have been removed before you leave site so that there are no holes.
- b. I don't need to do anything.
- c. Put up a barrier or fence to keep people out.

16. When you use lights, what do you need to do to stop them affecting the community? Tick all that you think are right.



- a. Nothing. It doesn't matter – the only thing that matters is that we can see what we're doing.
- b. Direct the lights so that they are pointing down at the ground.
- c. Direct the lights so that they are pointing away from the site boundary.

**17. A member of the community complains to you about dust from the construction site. What do you do?**

**Tick all that you think are right.**

- a. Politely ask them to wait safely away from the work area.
- b. Nothing it's not your problem.
- c. Get your supervisor or a manager to come and talk to them.

**18. You see a member of community on site, like this person near the excavator. What do you do? Tick all that you think are right.**



- a. This person could get knocked over by the excavator so I would tell them politely to move off site.
- b. Nothing. It's up to each person to keep themselves safe.
- c. Tell my supervisor.

**Section 1: Essential things to do**

**Module 6: Respecting yourself and others**

**19. What do you do if you see a child sitting on an excavator like this?**



- a. Leave them alone and let them play.
- b. Get them to help you with your job.
- c. Tell them to get off site because it is not safe.

**20. Draw a circle around the ways that you should treat people at work.**

**Equally**

**Fairly**

**Aggressively**

**Shouting**

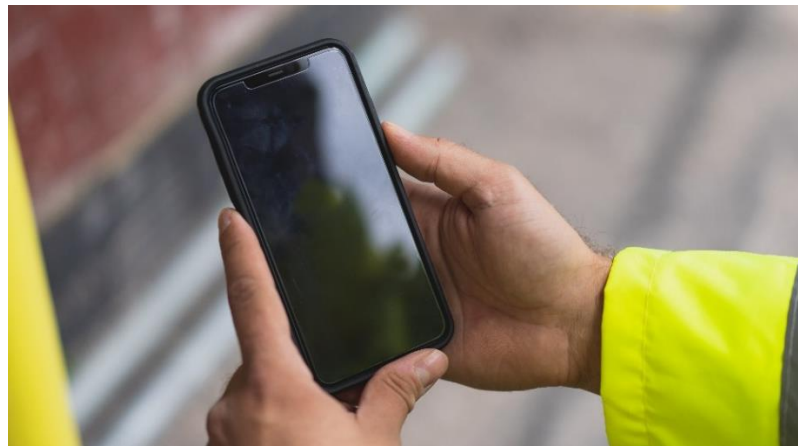
**Respectfully**

**21. You are being picked on by another worker who is threatening to take your wages. What do you do?**

- a. Nothing. I don't want to cause a problem.
- b. Report it.
- c. Threaten them too.

**22. Which of the following are examples of behavior that is unacceptable and not allowed? Tick all that you think are right.**

- a. A worker connecting water supply to homes asks the home owner to have sex with him before he will connect the water.
- b. A worker touches a female worker's breasts.
- c. A worker sends a sexually suggestive text message to another worker.





## Section 2: Everyday tasks

### Module 7: Dealing with incidents

**23. An incident has just happened - like someone getting injured or a fuel spill. What do you do?**

Draw a line between each step and what you do in the order that you do it.

**STEP 1**

Notify your supervisor or people on the Emergency Contact List

**STEP 2**

Control the incident

**STEP 3**

Stop work

**24. You accidentally get a hazardous substance on your skin which painfully burns off the top layer of your skin. What do you do?**

**Tick all that you think are right.**

- a. Wash it off with water.
- b. Get medical help.
- c. Tell them what substance it is.
- d. Put a plaster on it.

**25. You find this on site: What do you do?**

- a. Leave it. Someone else will sort it out.
- b. Follow the 3 Cs:  
Control the spill by putting the container upright   
Contain, and  
Clean up the spill using a spill kit.
- c. Put the container upright and leave it.



**26. You come across a badly injured worker on site. What do you do?**

**Draw a line between each step and what you do in the order that you do it.**

**STEP 1**

Wait for a first aider or emergency services to arrive

**STEP 2**

Check it's safe to go to help them

**STEP 3**

Call for help from the Emergency Contact List

## Section 2: Everyday tasks

### Module 8: Using fuels, oils, chemicals and materials

27. What extra Personal Protective Equipment do you need to wear in these situations? Draw a line between the task and the PPE you need.

Working with wet  
concrete and cement



Protective boots

Working with concrete  
additives



Rubber gloves

When emptying  
cement from bags



Dust mask

28. When you take fuel, oils or chemicals from the stores, you should:  
Tick all that you think are right.

- a. Put covers back over materials.
- b. Close the tap on drums and Intermediate Bulk Containers IBCs.
- c. Put liquids in containers with lids and label them.
- d. Use a pump to get fuel out of a drum.

**29. When you are using fuel, oils or chemicals on site, where should you put them? Tick all that you think are right.**

- a. Anywhere I like.
- b. In a drip tray.
- c. Away from where they might get knocked over.

**30. At the end of the shift, you have a small amount of fuel left in your fuel can. What do you do with it?**

- a. Take the fuel can back to the stores and put it in the hazardous materials storage area.
- b. Leave the fuel can on site.
- c. Pour the fuel on the ground.





## Section 2: Everyday tasks

### Module 9: Reusing, recycling and disposing of waste

31. Put the waste in the right bin. Draw a line between the waste and the bin you put it in.



Oily rag



Empty chemical containers



Empty plastic water bottle



Plastics bin



Oily rags bin



Hazardous waste storage area

**32. What should you do with waste on site?**

- a. Burn it.
- b. Put it in the right bin or waste storage area.
- c. Throw it in one big pile.

**33. Which types of waste must YOU not handle unless you have extra Personal Protective Equipment PPE and special training? Tick all that you think are right.**



a. Old tanks being removed



b. Used needles



c. Timber



d. Emptying toilet pits

## Section 2: Everyday tasks

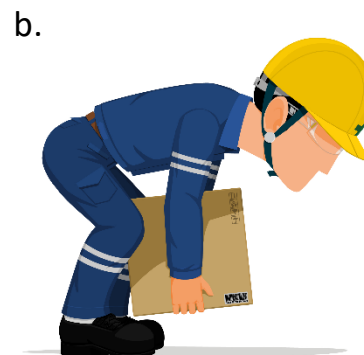
### Module 10: Lifting loads by hand

34. What do you need to do **BEFORE** you lift a load by hand?

Tick all that you think are right.

- a. Make sure it's not too heavy or large to lift on my own.
- b. Nothing – just get on with it.
- c. Think if there is a safer way to move it like using a wheelbarrow.
- d. Make sure there is nothing in the way that I might slip on or trip over.

35. Draw a circle around the right way to lift a load by hand.



### Section 3: Specific activities

#### Module 12: Using tools and static machines

36. What extra Personal Protective Equipment do you need to wear when using tools?

Draw a line between the task and the PPE you need.

Using a tool that creates dust



Gloves

Using a tool that could cut your hands



Full face shield

Using a tool to cut metal



Dust mask

37. Is this file safe to use?



Yes, because the file is in good condition.

No, because it's not safe to use a tool without a handle.



**38. You are operating this conveyor. What do you do about the dust?**

**Tick all that you think are right.**



- a. Turn on the water sprayer.
- b. Nothing – the dust doesn't matter.
- c. The water sprayer is not working so I tell my supervisor.

**39. Is this table saw safe to use?**

Yes

No



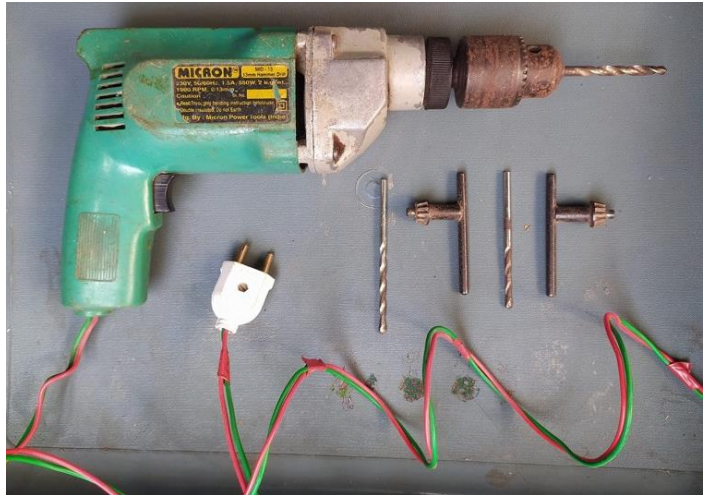
### Section 3: Specific activities

#### Module 13: Using electricity and electric tools

**40. What do you need to check on this tool before you use it?**

**Tick all that you think are right.**

- a. It's not damaged, for example there aren't any cracks in the casing.
- b. The cable fits securely into the tool and the plug.
- c. There is a label to show it's been inspected recently.
- d. The cable is shielded to cover the wires.



**41. You see cables like this on site: what do you do?**

- a. Nothing – everyone needs to watch where they are walking.
- b. Tell my supervisor so that they can be moved so that no one gets injured.



**42. If you were this worker, what is unsafe for you?**

**Tick all that you think are right.**

- a. Nothing.
- b. I'd be standing on a wet surface, very near water and handling the electric cable.
- c. I could get an electric shock.



**43. An electric tool you are using keeps cutting out. What do you do?**  
**Tick all that you think are right.**



- a. Turn it on again and carry on working.
- b. Tell my supervisor.
- c. Take it to the electrician to get it checked.



### Section 3: Specific activities

#### Module 14: Working in excavations and earthworks

44. Tick the things you need to look out for when digging. Tick all that you think are right.



a. Buried pipes and cables



b. Strange colors and smells



c. Buried waste



d. Other objects

45. Draw a circle around the excavations that are safe to get into:







d. All of the above.

### Section 3: Specific activities

#### Module 15: Working at height

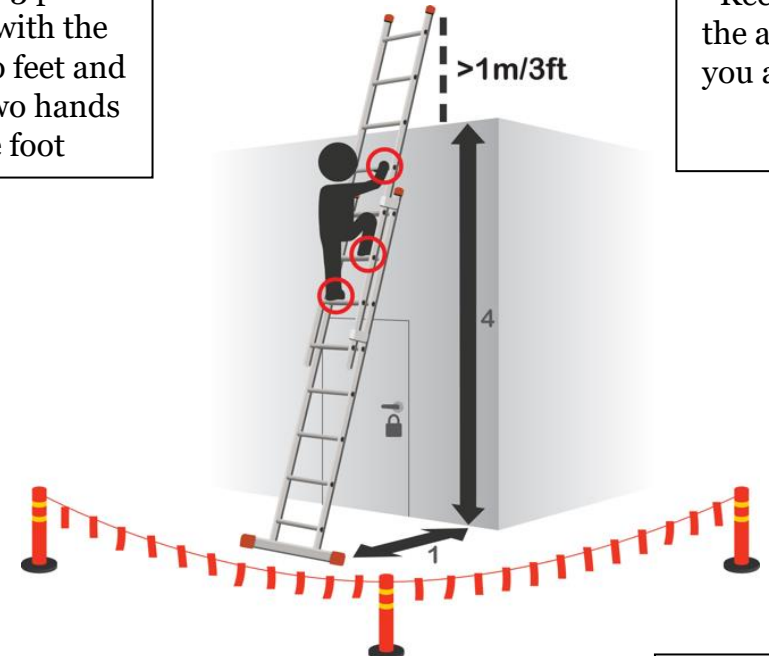
**48. What can you do to stop yourself from falling when working at height? Tick all that you think are right.**

- a. When working near an edge, face the edge and work on your knees.
- b. Always use the safe access stairs or ladder.
- c. Work whatever the weather is like.
- d. Wear a harness and lanyard.

**49. How do you need to take your tools up and down when working at height?**

- a. Just throw them to my mate who is already there.
- b. Carry them in both hands.
- c. Wear a tool belt or tool lanyard.

50. Draw a line to match the ways to use a ladder safely to the picture.



Always have 3 points of contact with the ladder – two feet and a hand or two hands and one foot

Keep people out of the area below where you are working with a barrier

Ladder to be at an angle of one out four up

Ladder to extend at least 1 meter higher than where the top of the ladder will land

### Section 3: Specific activities

#### Module 16: Working on or next to a road

51. Which extra Personal Protective Equipment must you always wear when working on or next to a road? Tick all that you think are right



High visibility:  
long sleeves and  
long trousers/  
pants



Safety goggles



Gloves

52. What are barriers like this for? Tick all that you think are right.



- a. I need to stay inside the barriers to keep away from traffic.
- b. To keep members of the community away from traffic and out of the work area.
- c. To make the working area clearly visible to oncoming traffic

**53. What is missing here?**



- a. There should be someone directing traffic – anyone on site can do it.
- b. Nothing is missing.
- c. There should be someone directing traffic but only someone who is specially trained.

**54. Why are signs like this important when you are doing work in or near a road?**



- a. To make the roadworks clearly visible to oncoming traffic.
- b. To ask drivers to slow down.
- c. To tell drivers where to go if there is a diversion.
- d. All of the above.

### Section 3: Specific activities

#### Module 17: Working over or near water

**55. How can you keep waterways clean and pollution free? Tick all that you think are right.**

- a. Leave a strip of vegetation next to the waterway.
- b. Do not pour any substances on the ground or into the waterway.
- c. I don't need to do anything - anything that gets in the water will get washed away.
- d. If carrying substances near water, put them in a fully sealed container.

**56. What do you need to do to keep safe when working over or near water? Tick all that you think are right.**

- a. Follow the rules for working at height.
- b. Nothing special.
- c. Wear a life jacket/ life vest / Personal Flotation Device.
- d. Check there is a throw rope or line, a ring buoy or life ring close by.



**57. You are working next to a river.**

How far away from the river do you need to keep your tools and materials?



- a. At least 2 paces away from the river.
- b. It doesn't matter. I can put them anywhere.
- c. At least 10 paces away from the river.