



KGID
2026
SEJONG

From Fragmentation to Integration: A Structural Shift in Agricultural Development Cooperation

- Connecting ODA, Private Sector, MDBs, And R&D for Scalable Impact

Jeongha Jeong

Assistant Manager, Global Project Office

Korea Rural Community Corporation(KRC)

Table of Contents

- Integration for Scale
- Scaling Mechanisms
- Case Studies from Korea's Agricultural ODA
- Key Lessons and Challenges
- Way Forward: Designing for Scale

Integration for Scale : Rethinking Agricultural Development Cooperation

2026 Blueprint for South Korea International Development Strategy (K-ODA)

2026 International Development Cooperation Comprehensive Implementation Plan



Innovation and Results-Oriented Vision

Build integrated systems to realize universal values and achieve mutual growth.



Activating Private Sector Participation

Inject private resources into development projects to maximize efficiency and outcomes.



Strengthening Global Cooperation Infrastructure

Support partner private projects through joint efforts with Development Finance Institutions (DFIs).

2026 Grant Aid Implementation Plan



Global Solidarity and Practical Integration

Strengthen international solidarity through the effective execution of grant aid programs.



Diversification of Financing

Secure diverse aid resources using blended finance and corporate partnerships.



Solidifying the Partnership Ecosystem

Build sustainable relationships with multilateral organizations, civil society, and academia.



Qualitative Growth of Aid

Integration for Scale : Rethinking Agricultural Development

Cooperation

Strategic Framework for International Agricultural Cooperation



Strengthening Partner Self-Reliance

Supporting the entire agricultural value chain and building capacity in partner countries.



Enhanced Public-Private Cooperation

Developing collaborative models between governments, NGOs, and private enterprises to boost project outcomes.



MAFRA: Policy & Oversight

Oversees agricultural ODA projects within the national development cooperation and grant aid framework.



KRC: Specialized Implementation

Manages project identification, planning, field-level operations, and expert dispatch to partner countries.

Achievements & Current Status (2026)



Cumulative Projects
75 projects across 25 countries



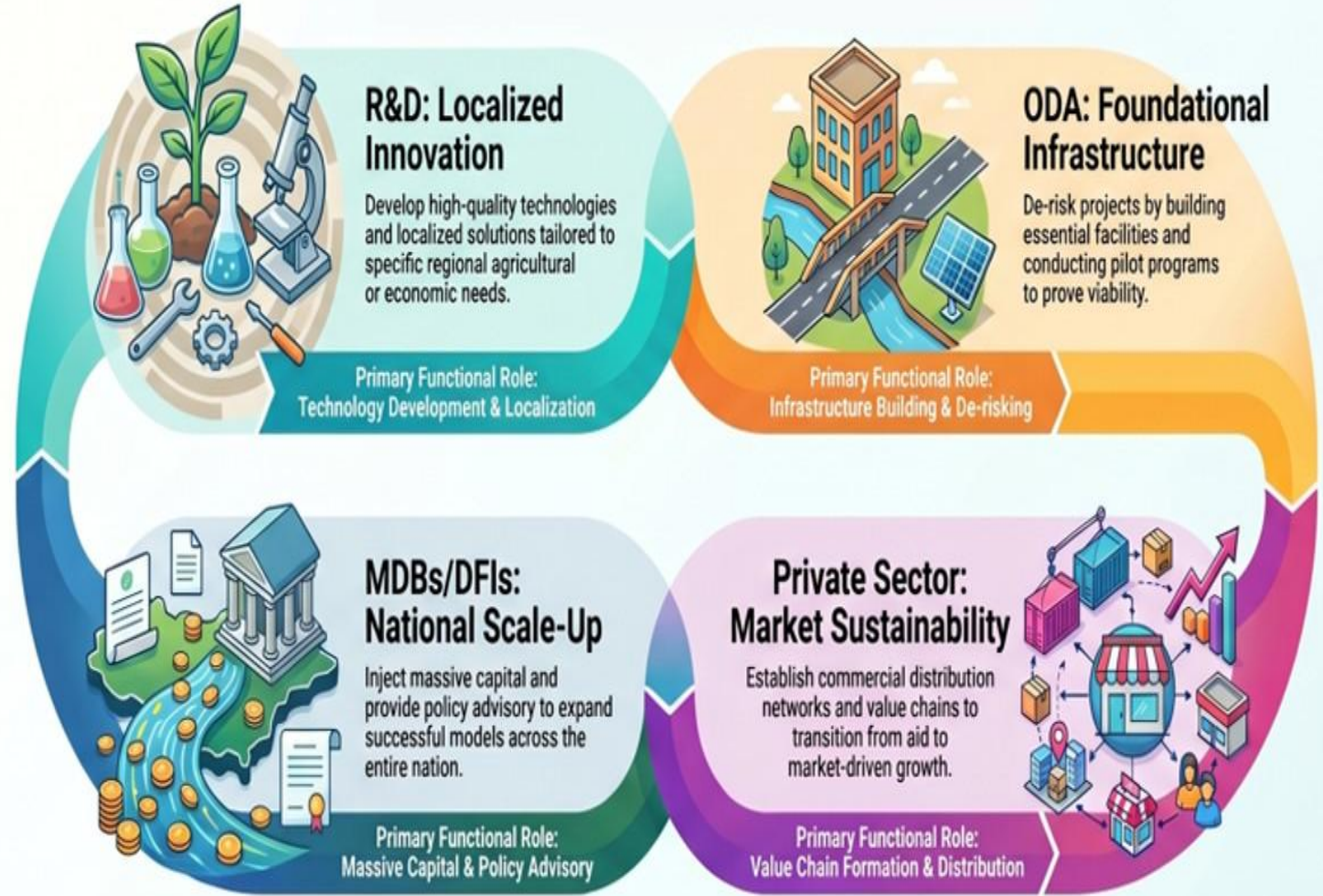
Bilateral ODA Projects
23 projects in 20 countries



Multi-bi Projects
13 projects currently operating

Scaling Mechanisms

Scaling Impact: The Integrated Delivery Model for International Development Cooperation



This model outlines an integrated approach to international development, where innovation is first refined through research, supported by foundational infrastructure, and then scaled through commercial markets and massive capital investment to ensure long-term national self-sufficiency.

Case Studies from Korea's Agricultural ODA - Vietnam



Case Studies from Korea's Agricultural ODA - Ghana

K-RICEBELT: CULTIVATING FOOD SECURITY IN GHANA

Illustrating how Korean technology and infrastructure empower Ghana's farmers and improve food security.

THE COLLABORATIVE ENGINE (KOREAN AGENCY ROLES)



INFRASTRUCTURE & LAND MANAGEMENT

MAFRA and Korea Rural Community Corporation manage irrigation facilities and land consolidation.



ADVANCED SEED TECH & CULTIVATION

The Rural Development Administration (RDA) produces high-quality rice seeds and transfers technology.



SUSTAINABLE SOLAR ENERGY

MOTIR installs solar facilities to provide clean energy for agricultural operations.

FROM PRODUCTION TO LOCAL IMPACT



BOOSTED SEED PRODUCTIVITY

Strategic technology transfer significantly increases local rice seed yields.



STRUCTURED SEED DISTRIBUTION

Produced seeds reach local farmers via the Ghana government and private sector.



ENHANCED FOOD SECURITY

Improving food self-sufficiency and revitalizing the local rural economy.

Case Studies from Korea's Agricultural ODA

- How can we scale up ODA projects?

How to connect ODA, private companies, MDBs, and international organizations to produce integrated and effective results?

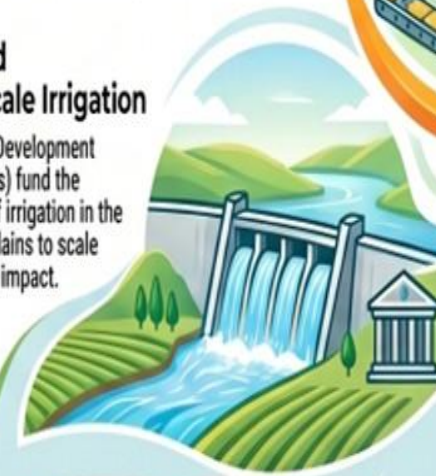
Private Sector Integration

Entry of Korean fertilizer companies to produce and supply essential nutrients locally, reducing import dependency and costs.



MDB-Led Large-Scale Irrigation

Multilateral Development Banks (MDBs) fund the expansion of irrigation in the Dawhenya Plains to scale the project's impact.



Post-Harvest Loss Reduction

Follow-up projects establish Rice Processing Complexes (RPC) to improve milling and storage, minimizing waste after the harvest.



OVERALL GOAL & VALUE CHAIN



THE SYNERGISTIC INTEGRATED MODEL

A holistic approach combining ODA, private capital, and international expertise to achieve food security and rural prosperity in Ghana.

International Organization Support

Global agencies ensure seed distribution reaches the village level, connecting centralized production directly to individual smallholder farmers.



K-RICEBELT FRAMEWORK

Infrastructure & Land Consolidation

Led by MAFRA and Korea Rural Community Corporation to establish essential irrigation systems and prepare land for efficient farming.



High-Quality Seed & Tech Transfer

The Rural Development Administration (RDA) provides high-yield rice seed production and advanced cultivation technologies to local farmers.



Sustainable Energy Integration

MOTIR implements solar energy facilities to ensure the sustainable and cost-effective operation of agricultural sites.



Key Consideration and Potential Challenges

- Key Consideration
 - Close Coordination Among Multiple Actors
 - Thorough De-risking to Attract the Private Sector
 - Localization and Market Acceptability
- Potential Challenges
 - Institutional Barriers and Uncertainties
 - Sustainability Gap Post-ODA
 - Silo Effect Among Stakeholders

Way Forward: Designing for Scale

- How to prepare
 - Prepare a PPP exit Strategy from the Planning Stage
 - Build Strong Governance for Local Distribution Networks
 - Continuous dialogue among stakeholders

From the Seeds of Partnership to a National Harvest