



KGID
2026
SEJONG

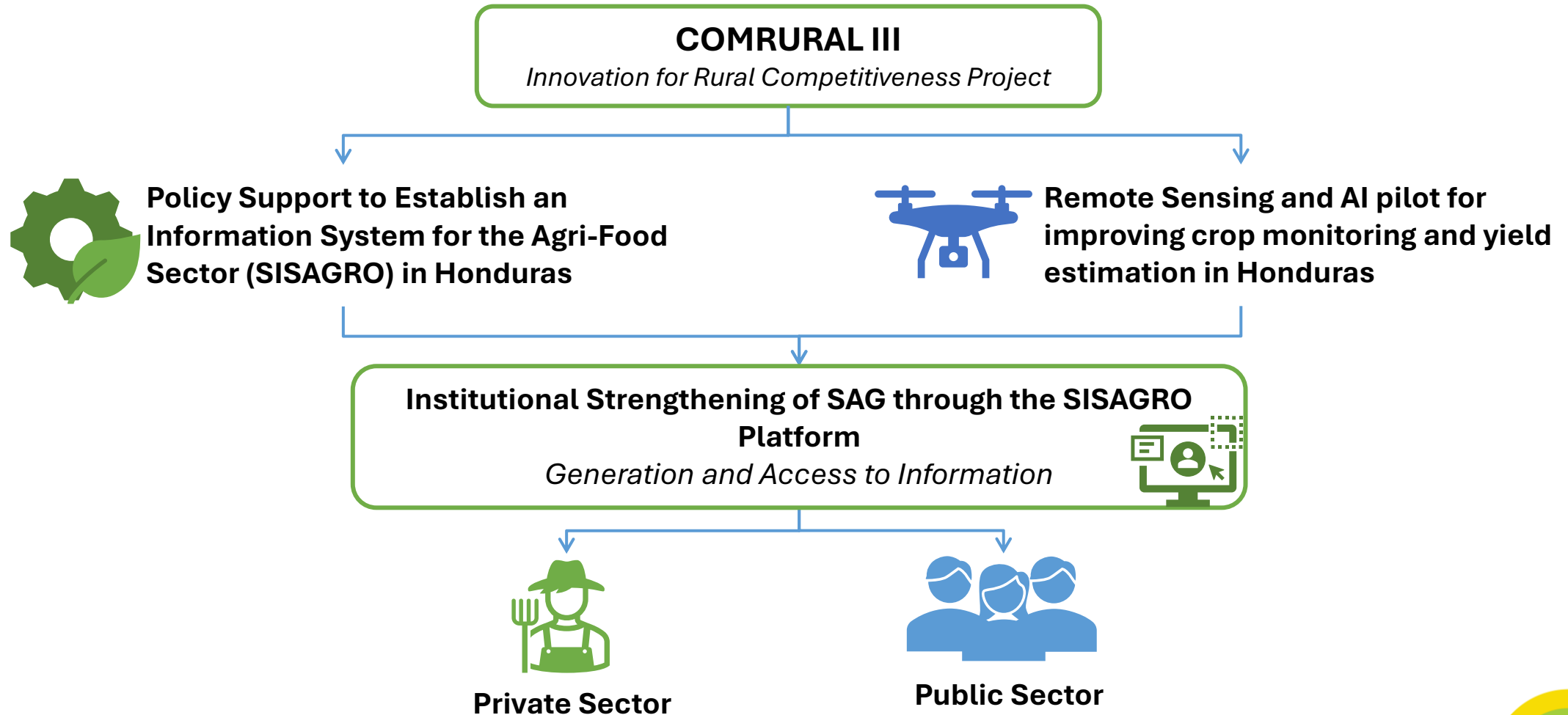
Policy Support to Establish an Information System for the Agri-Food Sector (SISAGRO) in Honduras

Francisco Bueso

Senior Agriculture Economist SLCAG

World Bank Group

BACKGROUND



2024-2026: From Capacity Building to SISAGRO Framework and Design



Enable Policy support for the development of SISAGRO

- Diagnosis of current agri-food information service
- Identification of gaps, bottlenecks and challenges at different levels
- Recommendations of policy instruments: data governance policy



Enabling technical support for the development of SISAGRO

- Policy framework for the establishment of SISAGRO
- Design of the SISAGRO platform
- Proposals for Application Programming Interfaces (APIs)
- Design of User Interface



Building capacity for the development of SISAGRO

- Training in Agrometeorology and Remote Sensing.
- 29 participants (2024)
 - 26 participants (2025)

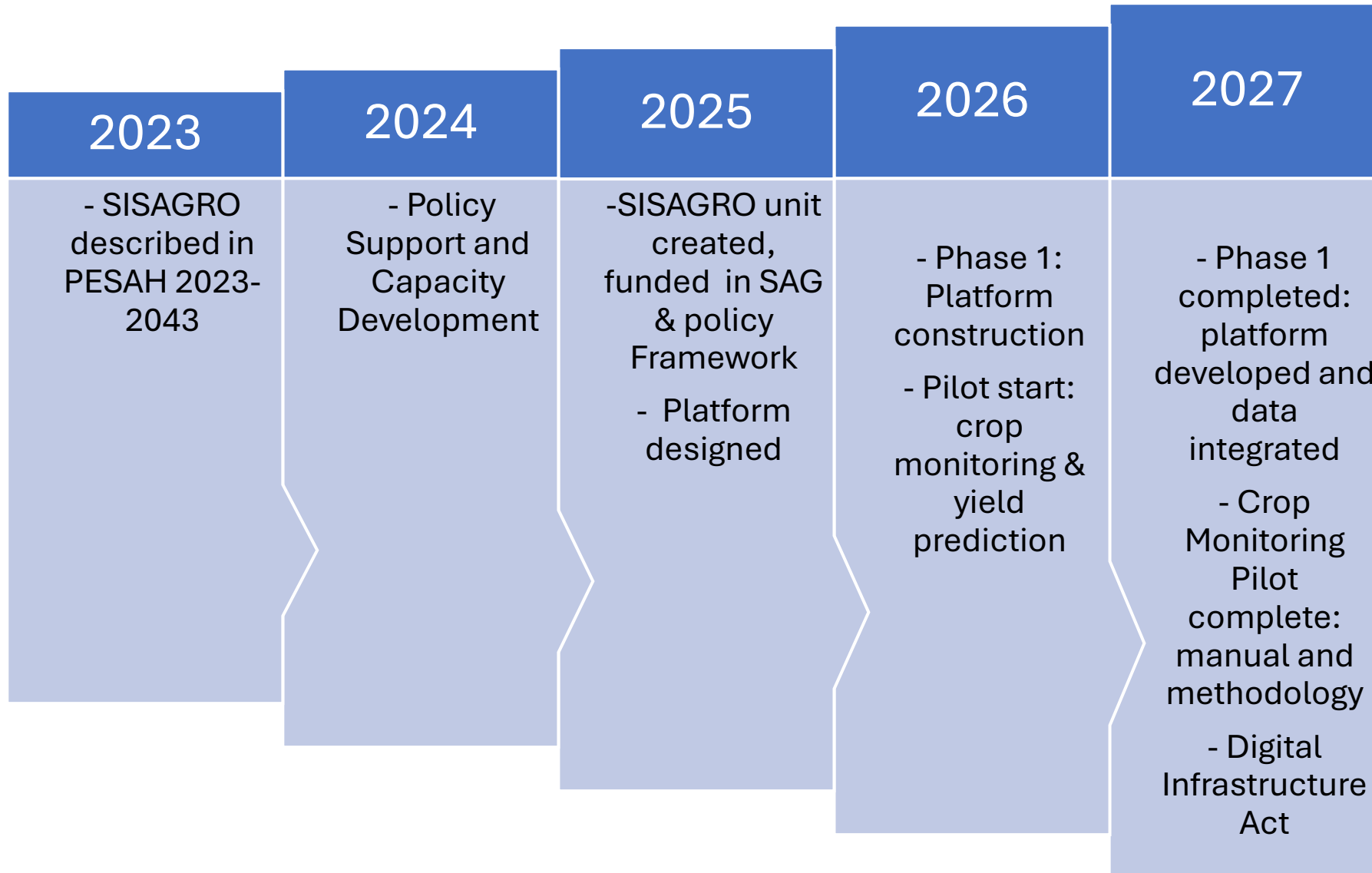
- Field trained in drone data collection, ground survey data collection.
- 7 SAG technicians



Building capacity for the operation of SISAGRO

- 6 participants, trained in digital platforms and drone application in Korea.(2024)

SAG-SISAGRO Evolution 2023-2026 and beyond



Partnerships that give shape to SISAGRO

SAG-SISAGRO investments COMRURAL II and III: US\$ 2.5 M

- Remodeling and Upgrading of the SAG SISAGRO
- Furniture for File Storage and Other Office Equipment
- Procurement and Upgrading of Remote Sensing Equipment (Drones, GPS, Sensors, Cameras)
- Development of Phase 1 of the SISAGRO Platform
- Platform Analysis, Design, and Development (Harmonization with the Input Support Program Platform)
- Development of Comprehensive and Dynamic SISAGRO Dashboards
- Definition of Authorization Workflows for Processes
- **Meteorological Stations with Integrated Transmitters for Experimental Stations (Omonita-SPS and Ramón Villeda Morales-Ocotepeque)**



New Partnerships



DEVELOPMENT AND IMPLEMENTATION OF SISAGRO



Integrated, modern, and interoperable technology



Integration of data sources

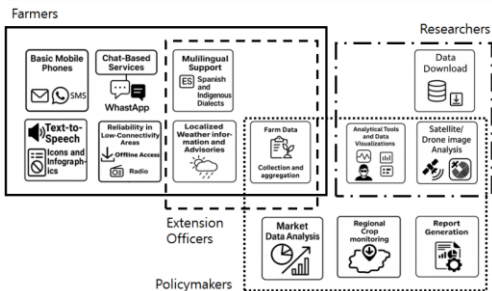
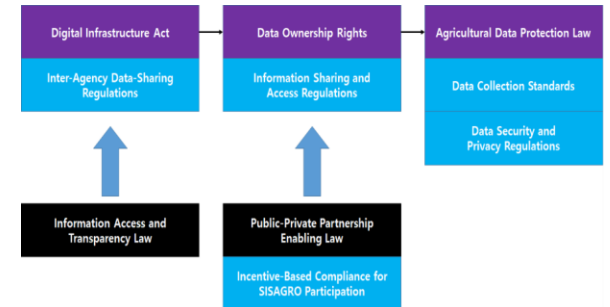
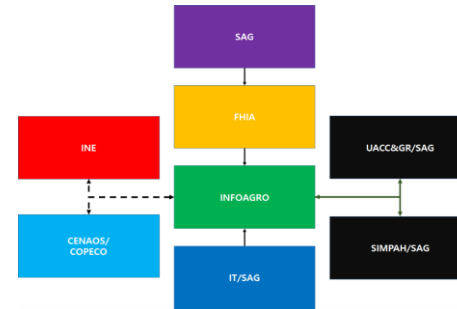
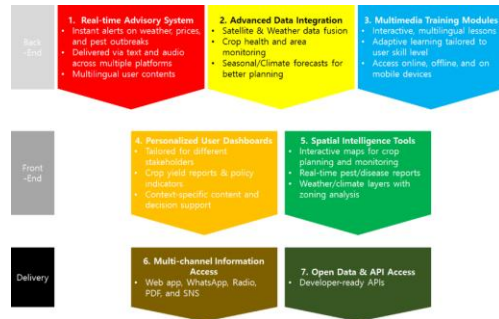
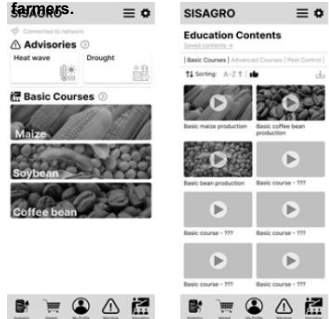


Institutional coordination



Regulatory framework for data protection and management

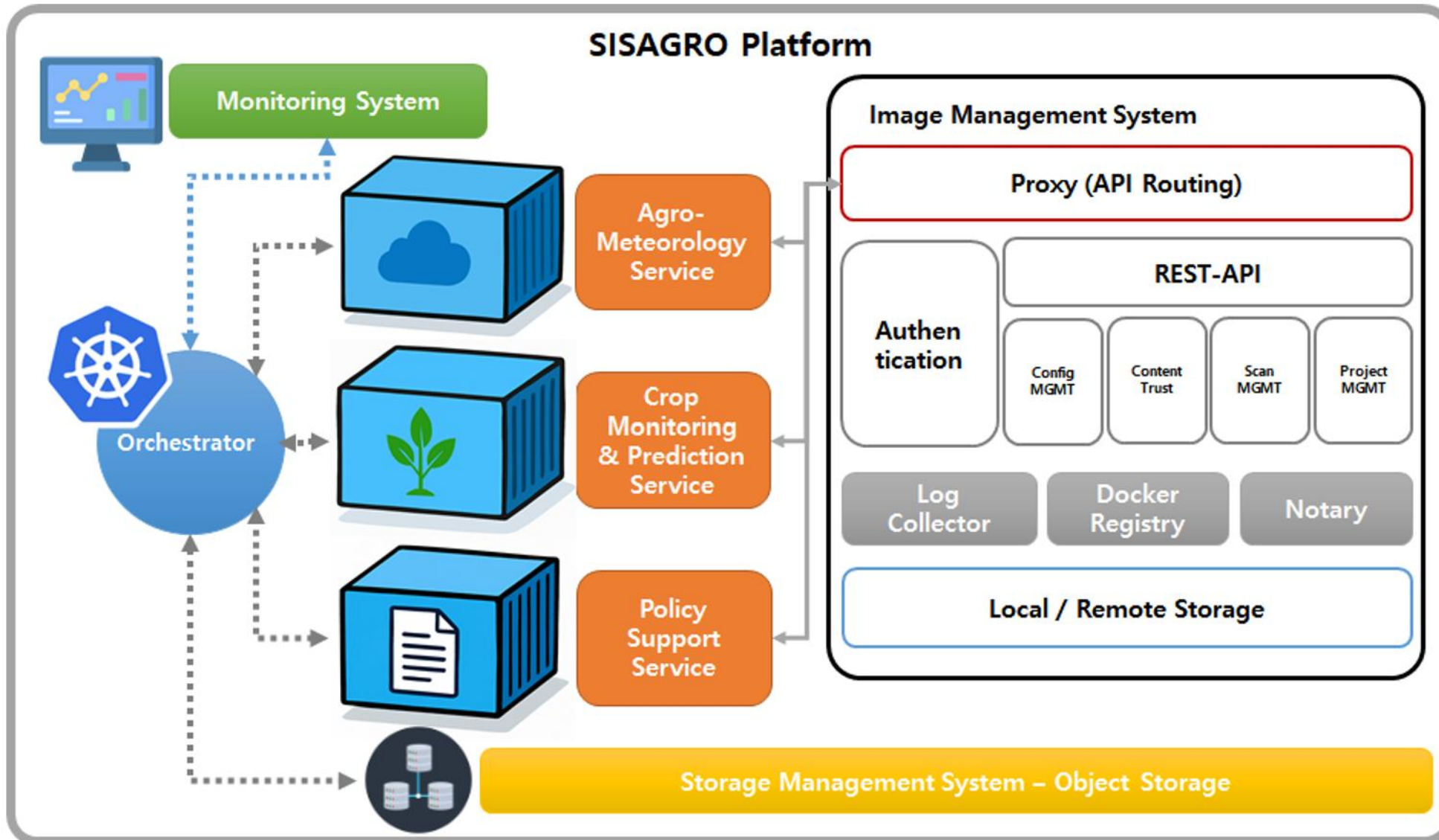
Mobile user interface of training modules for



Support for climate-smart agriculture

Outline of the legal framework for the establishment and operation of SISAGRO. Enacted laws are indicated in black. Blue arrow represents the recommended sequence of implementation for the laws.

SISAGRO Platform Architecture: Phase 1



Next Steps for SISAGRO

- SISAGRO implementation has been prioritized by SAG for Honduras Agriconnect 2026-2030 action plan:
 - DPI investments: platform, user interface, APIs and content modules
 - Policy reforms: digital infrastructure act, data ownership rights law (PPPs) and agricultural data protection law
- Phase 2 and 3 implementation will be adjusted based on new partner priorities and available funds
- Policy Note on Policy Support for SISAGRO (June 2026)

THANK YOU

Francisco Bueso

Email: fbuesoucles@worldbank.org

Phone: +1 (202) 594-2374