

## Session 7: AI and Emerging Technologies Driving Green Growth

**KGID  
2025**

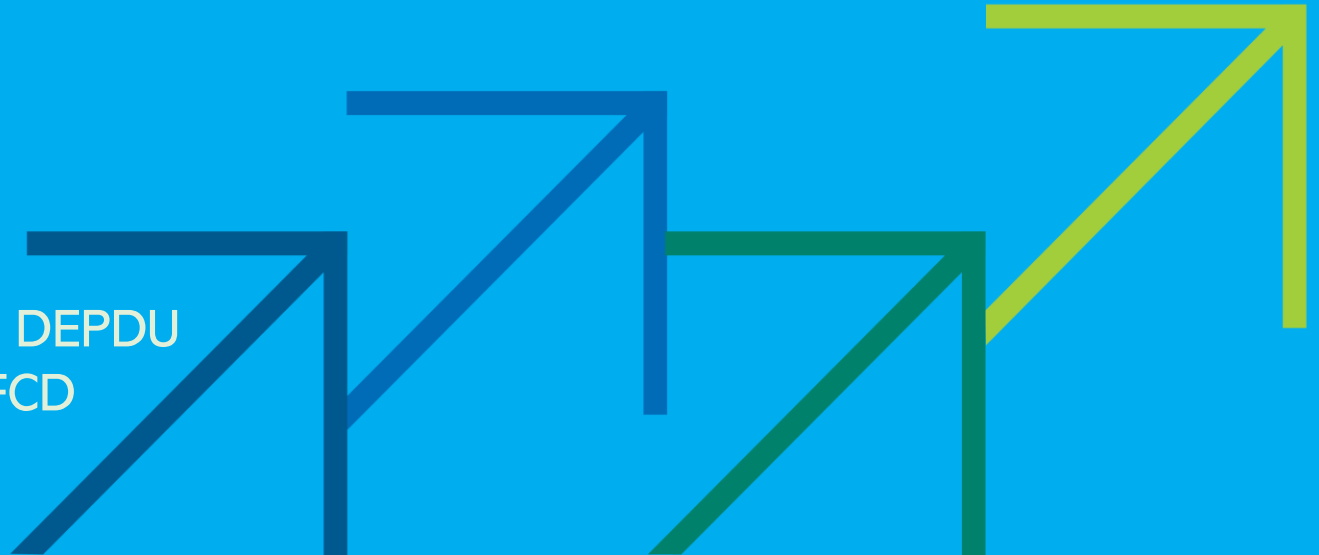
**Green Growth:  
The Path to  
Sustainable Jobs**



*Results and Insights from KGGTF Grant:*

## Shared Data and AI Platforms: Foundations for Climate Action

**Zaki B. Khoury**, Senior Digital Specialist, DEPDU  
**Seth Ayers**, Senior Digital Specialist, DTFCD



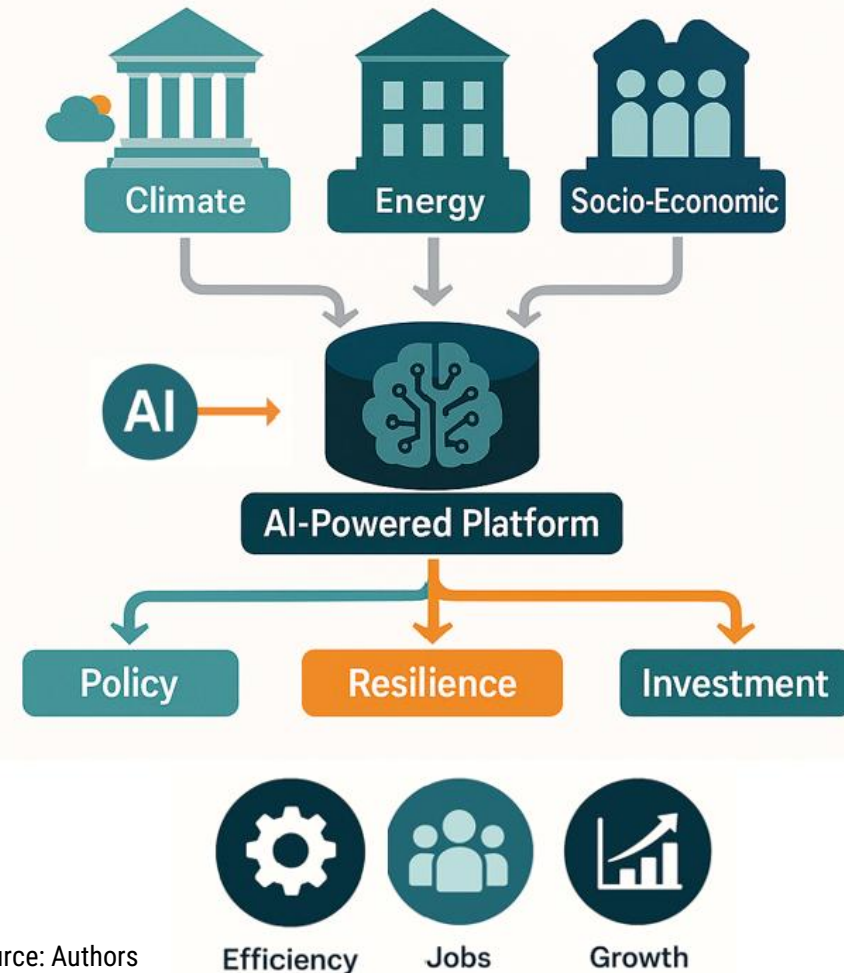
# From Climate Data Gaps to AI-Driven Action

KGID  
2025

- Only **8% of global climate data** is openly shared and machine-readable.
- Climate impacts cost developing countries **up to 5% of GDP annually**.
- Imagine turning every weather station, satellite image, and emissions record and more into **AI insights for resilience and growth**.

## Shared Data Platforms in Practice

Integrating Climate, Energy, and Socio-Economic Data



Source: Authors

Official Use Only

# Strengthening Data Sharing for AI-Enabled Climate Platforms

## Challenges with Data Sharing

- **Fragmented & inaccessible climate data**
- **Inadequate digital infrastructure** and institutional capacity
- **Governance challenges** & weak trust frameworks
- **Limited data quality** and standardization.

## Activity Components

- **Assess data-sharing governance** for AI-driven climate action.
- **Research global best practices** to guide platform interoperability.
- **Develop a diagnostic tool** with visual analytics to identify gaps and opportunities.
- **Deliver an action roadmap** with short-, medium-, and long-term priorities

# Assessment Framework and Diagnostic Tool

KGID  
2025

- To develop a **diagnostic tool** that asks a series of questions, provides results through a score, visualizations, recommendations and reporting to understand holistically a country's readiness to develop a **data sharing platform for Climate action**.

- Six categories for questions:

- Governance
- Data availability, standards and quality
- Institutional capacity
- Digital infrastructure
- Technology and tools
- Stakeholder engagement



# The Maldives: why coral reefs are important ?

KGID  
2025

Approx. 25% of all marine life, including over 4,000 species of fish, are dependent on them

Complex and Fragile: Water temps, salinity, acidity, runoff, physical damage, etc.



Tourism  
Fisheries  
Sustainability



## World Bank Engagement:

Digital Maldives for Adaptation, Decentralization and Diversification Project (P177040) - US\$10 million

### Components:

1. Improved digital connectivity & competitiveness
2. Digital identification for improved in-person & online service delivery
3. **Digital technologies & data platform for climate resilience**



# Scaling Impact Globally: From Pilot to Platform for Sustainable Jobs

KGID  
2025

**Climate Diagnostic Tool** and AI platforms are digital public goods for climate and economic resilience.

Scaling this approach will:

- Accelerate climate-smart investments and job creation.
- Strengthen data-driven policy ecosystems.
- Support resilient infrastructure planning.



The image shows the cover of a report titled "Climate Diagnostic Tool". At the top left is a logo of a globe with latitude and longitude lines. The title "Climate Diagnostic Tool" is prominently displayed in the center. Below the title, a subtitle asks "Why Should You Complete The Country Readiness Assessment?". The main body of the cover is dark blue with white text. It states that by completing the assessment, government entities can:

- **Assess Data-Sharing Readiness:** Evaluate your entity's capabilities across six key areas:
  - Governance
  - Data availability, standards, and quality
  - Institutional capacity
  - Digital infrastructure
  - Technology and tools
  - Stakeholder engagement
- **Receive Tailored Recommendations:** Get customized, actionable recommendations based on your entity's results in these six areas to address gaps and enhance data-sharing capabilities.
- **Collaborate on a National Roadmap:** The results from each entity's assessment will be aggregated into a country-specific roadmap, designed to strengthen national data-sharing for climate action.

On the right side of the cover, there is a photograph of a large, modern industrial facility with a complex network of pipes and structural steel, possibly a water treatment plant or a large-scale manufacturing facility. A blue circular graphic element is overlaid on the right side of the cover.

Through KGGTF support, the World Bank is helping countries build the digital foundations for green, inclusive growth

# Thank You



- Zaki B. Khoury ( [zkhoury@worldbank.org](mailto:zkhoury@worldbank.org) )
- Seth Ayers – ( [sayers@worldbank.org](mailto:sayers@worldbank.org) )