



**KGID  
2025**

**Green Growth:  
The Path to  
Sustainable Jobs**

# Knowledge Sharing Program (KSP) :

## Korea's Global Knowledge Partnership for Sustainable Development

**Dr. HoKyung Bang**

Director of Development Research

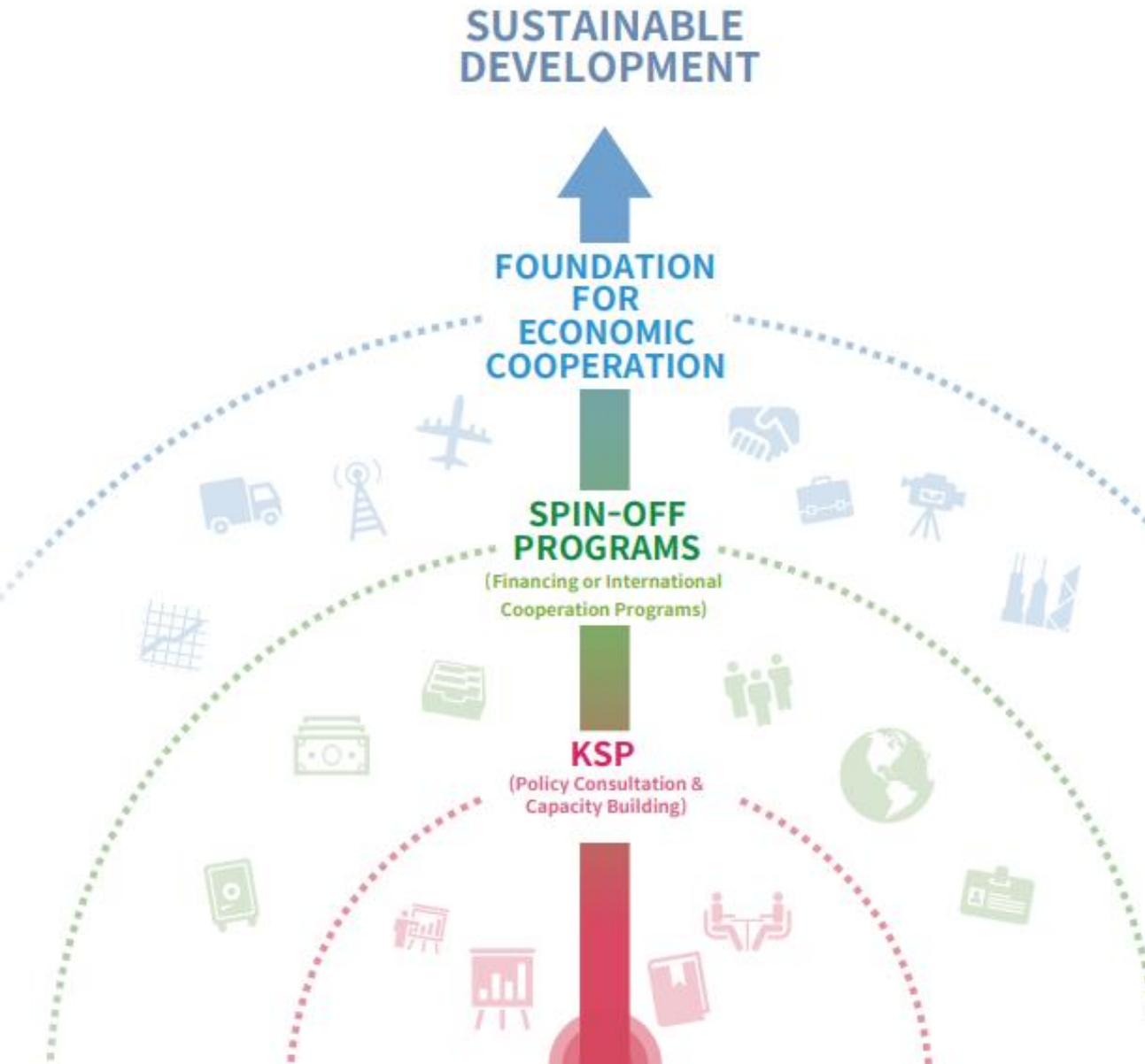
Center for International Development (CID)

Korea Development Institute (KDI)



# Table of Contents

---



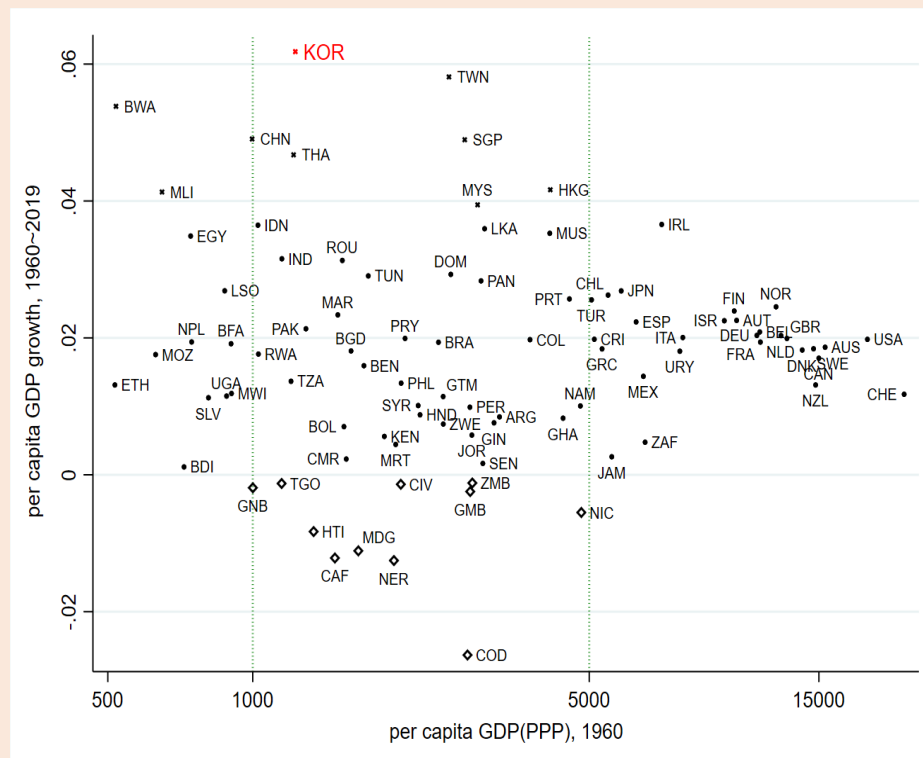
- 1 KSP: Background and Structure
- 2 The Pathway to Knowledge-based Growth
- 3 KSP in Numbers
- 4 How KSP Works
- 5 Project Type and Cycle
- 6 Cooperation Areas
- 7 Future Collaboration

# KSP: Background and Structure

## ◆ KSP is knowledge-intensive development and economic cooperation, launched in 2004

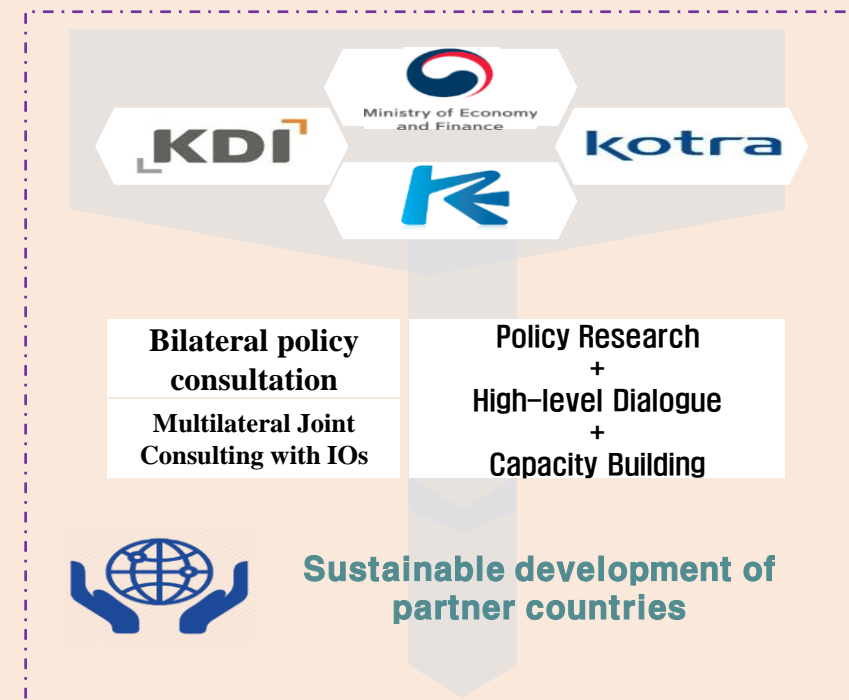
- ✓ Ministry of Economy and Finance of Korea (MOEF) has financed and administrated the KSP, while KDI, KEXIM Bank and KOTRA has planned and implemented KSP projects.

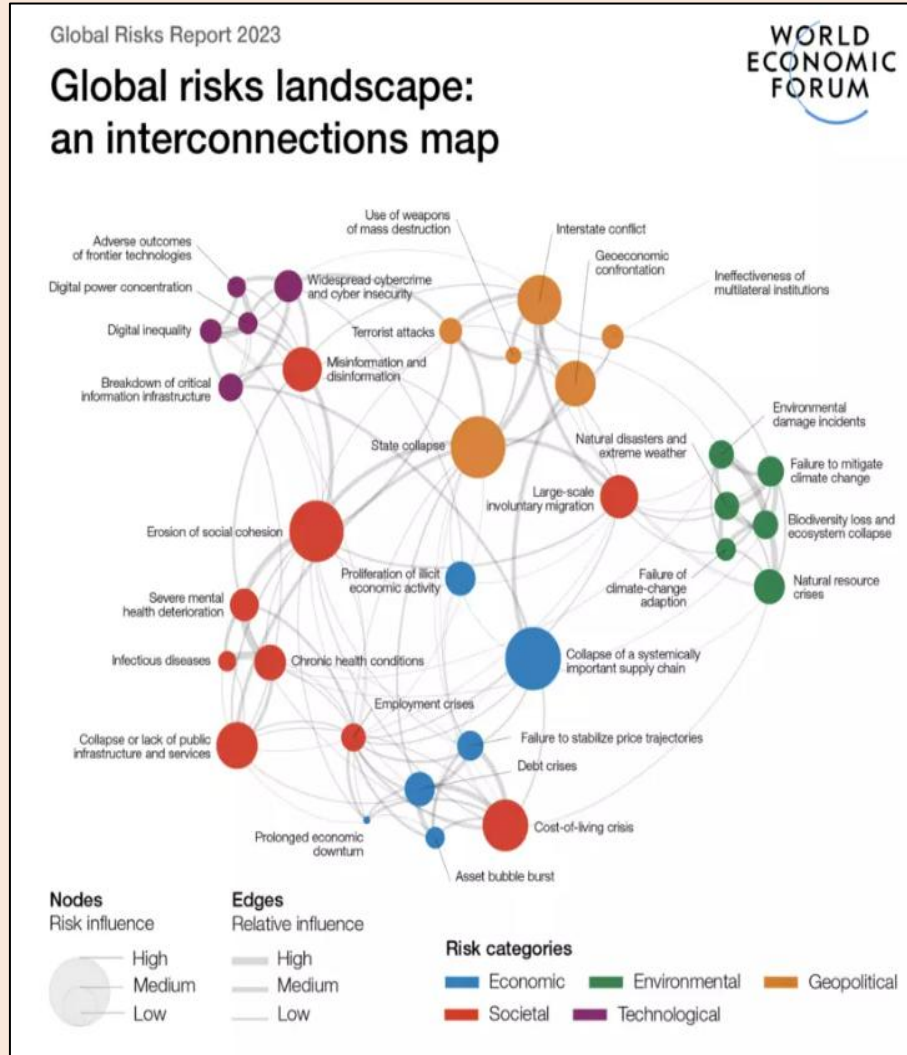
Figure 1. Per Capita GDP Growth Rate



Source: Calculated using Penn World Table 10.01

Unemployment in South Korea is **25 percent** of the labor force, **per capita gross national product** is well under **\$100**, **exports** amount to only **\$20 million**, while **imports** reach **\$200 million**. There is **no possibility** of an economic miracle being wrought in South Korea.  
— Edward W. Wagner, “Failure in Korea,” *Foreign Affairs*, 1961



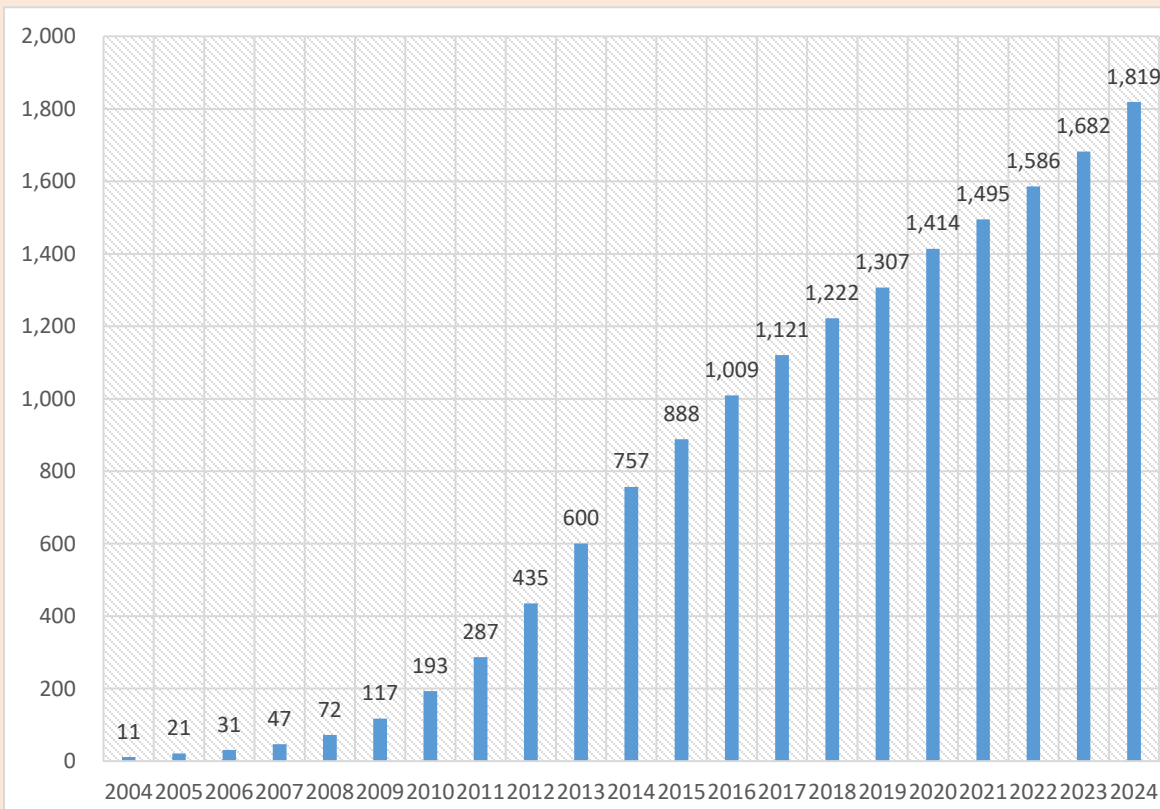


Paul Krugman

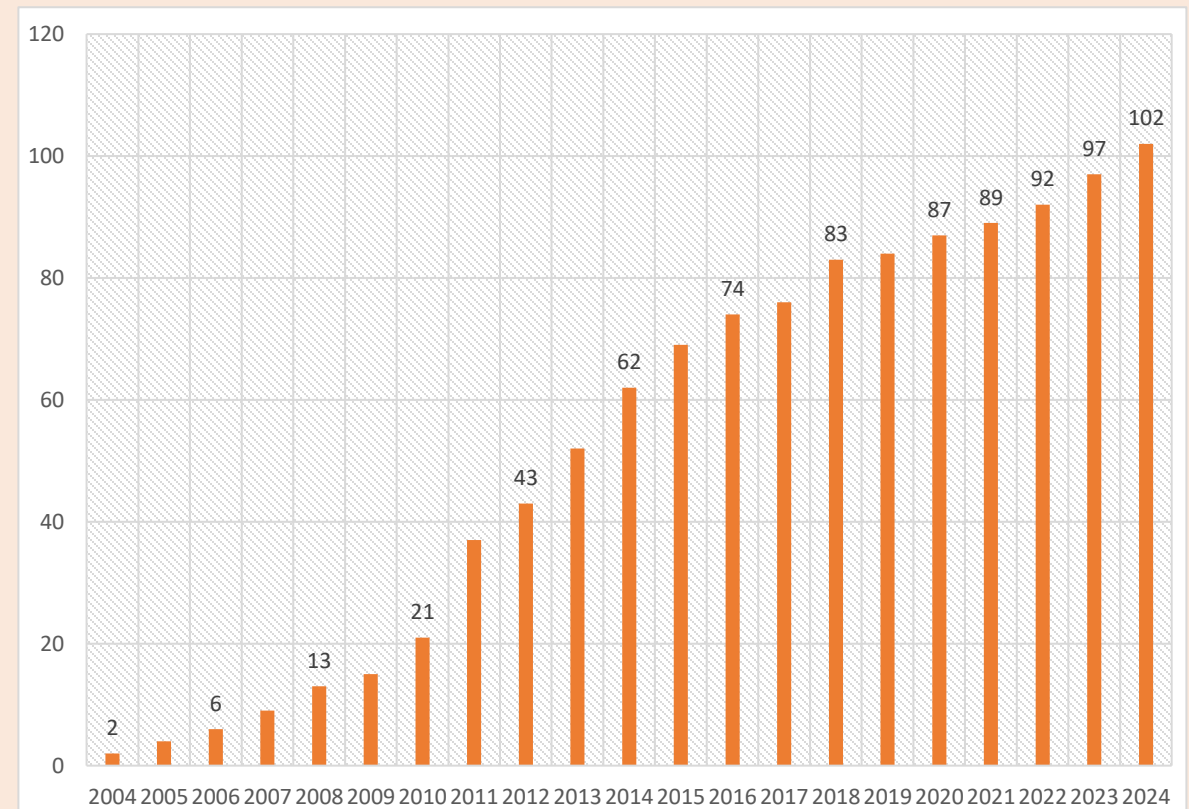
“If **global value chains** are not going to be **spreading technology** as repeatedly as they were in the past, then we can have active policy to try and promote that. Public efforts like **KSP** have a **very important mission to today’s world economy**, and it is more valuable than ever.” (2019)

➤ KSP has delivered policy consultations on more than 1,800 topics across 102 partner countries.

KSP topics by year  
(2004-2024, cumulative)



KSP partner countries by year  
(2004-2024, cumulative)



## ➤ Government-to-Government Policy Consultation Platform

- ✓ Promotes policy dialogue and mutual learning
- ✓ Provides institutional and policy recommendations
- ✓ Supports joint research and capacity building
- ✓ Delivers outcomes through policy consultation report

### Policy Research



Offer customized policy solutions for partner countries based on comprehensive analysis of their economic and social status, including comparative research

### Capacity Building



Invite stakeholders from partner countries to Korea for participatory training to promote knowledge application

### Policy Consultation

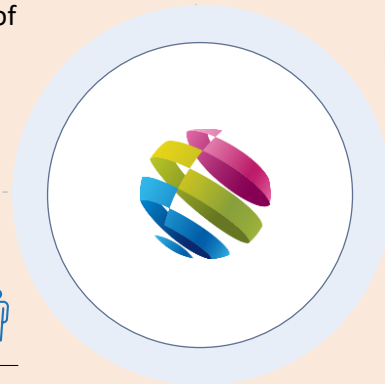


Sharing measures to address policy task with senior policy makers to enhance the likelihood of effective policy development/implementation

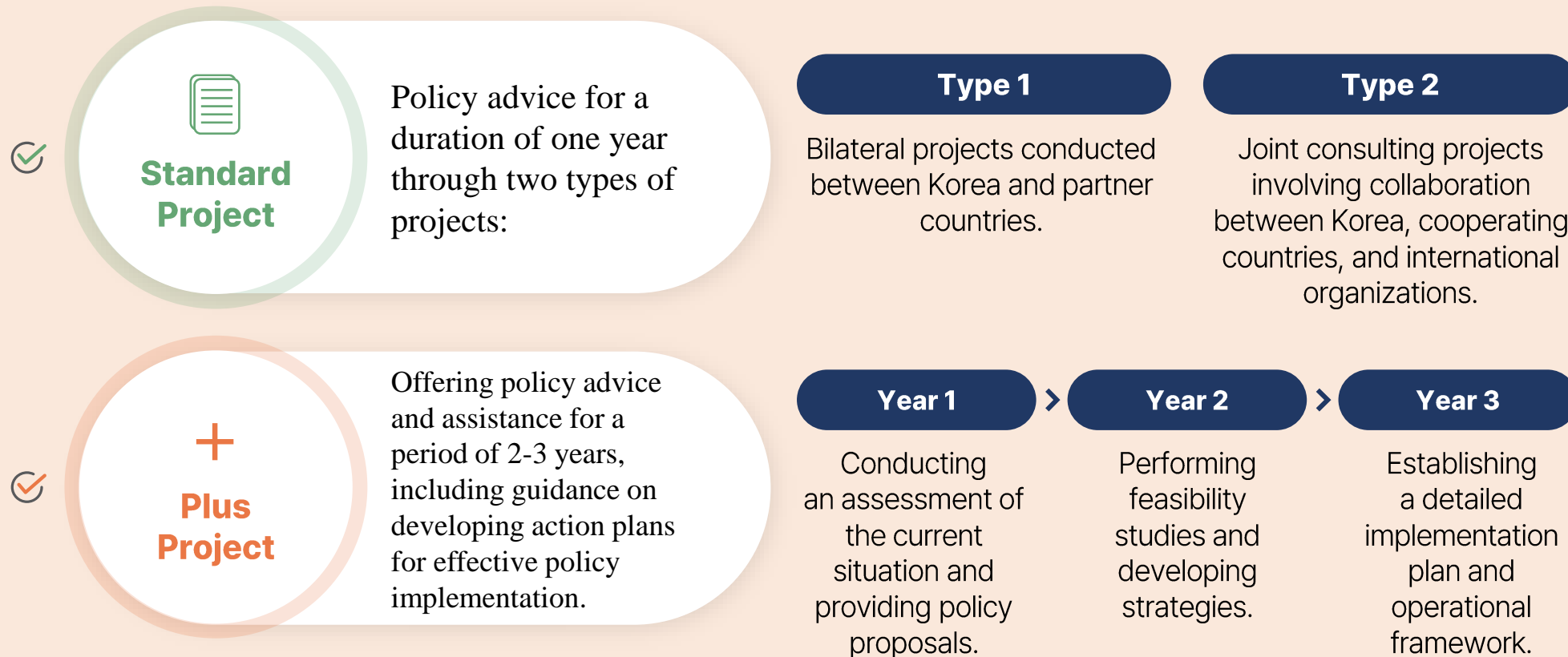
### Networking



Exploring opportunities for public-private network-based economic cooperation between both countries



KSP consists of both standard projects, which involve bilateral policy advisory by Korean experts and joint consulting with various partners, including international organizations, typically lasting for one year, and KSP Plus projects, which are long-term collaborations with the Korean government spanning 2-3 years.







Notes : 1. N represents the project year (e.g. 2023/24)

2. The timing for submitting project proposals and selection may vary depending on the type of project or partner country.



Category	Specific Policy Areas
<b>Economic Policies</b>	<ul style="list-style-type: none"> <li>• Macro-Economic Policies</li> <li>• Public Finance</li> <li>• National Development Strategy</li> </ul>
<b>Industry</b>	<ul style="list-style-type: none"> <li>• Industrial Policies</li> <li>• Science and Technology</li> <li>• Trade</li> <li>• Corporate Policies</li> <li>• Small and Medium Enterprises</li> </ul>
<b>Infrastructure &amp; Environment</b>	<ul style="list-style-type: none"> <li>• Transport</li> <li>• Smart City</li> <li>• Sanitation</li> <li>• Climate Change Response</li> <li>• Rural Development</li> </ul>
<b>Social Development</b>	<ul style="list-style-type: none"> <li>• Agriculture</li> <li>• Human Resource Development</li> <li>• Social Welfare</li> <li>• Health &amp; Medicine</li> </ul>
<b>Public Management</b>	<ul style="list-style-type: none"> <li>• Public Administration</li> <li>• Digital Government</li> <li>• Job Creation and Employment</li> </ul>

## 08 Cooperation Areas: Flexible framework to address diverse needs and core themes



### Green Transition

- Low carbon economy
- Renewable energy
- Resource management/conservation
- Waste management
- Climate resilience

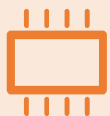


### Digital Transformation

- Smart city (Smart buildings / transportation, etc.)
- Big data, ICT
- E-government, education, healthcare, business

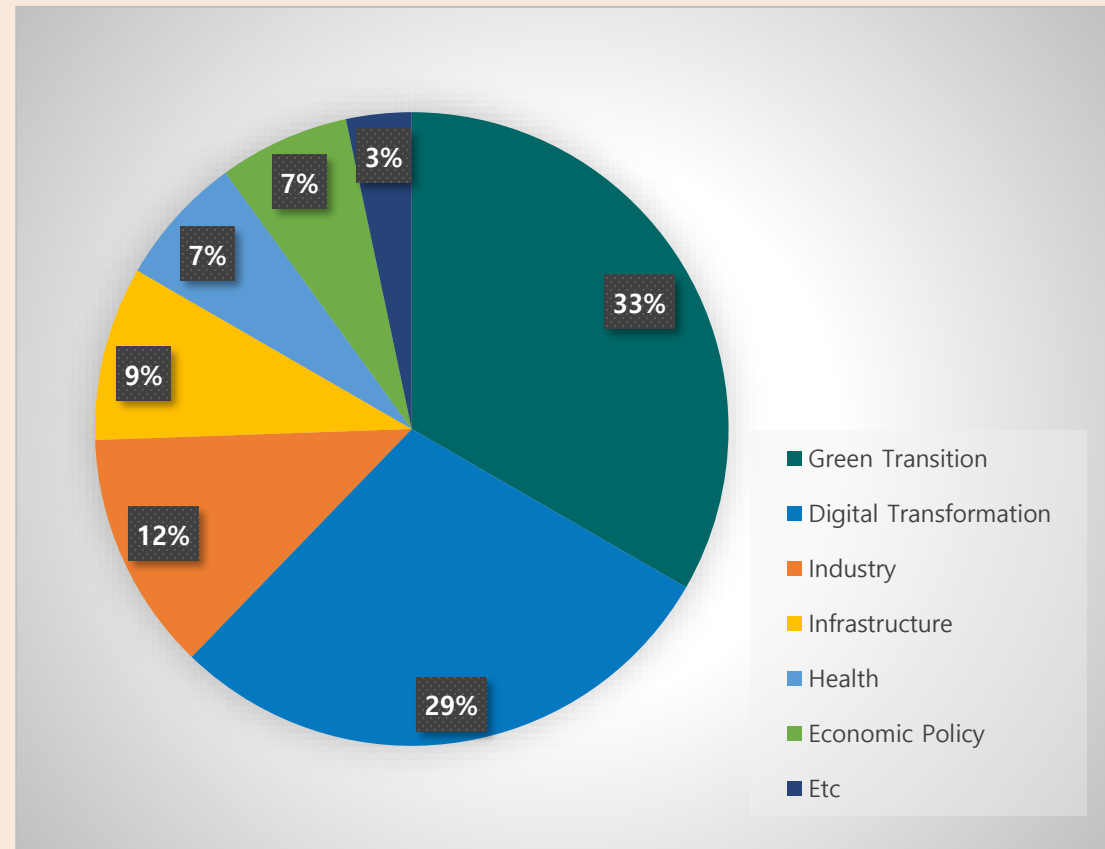


### SMEs Innovation, Start-up

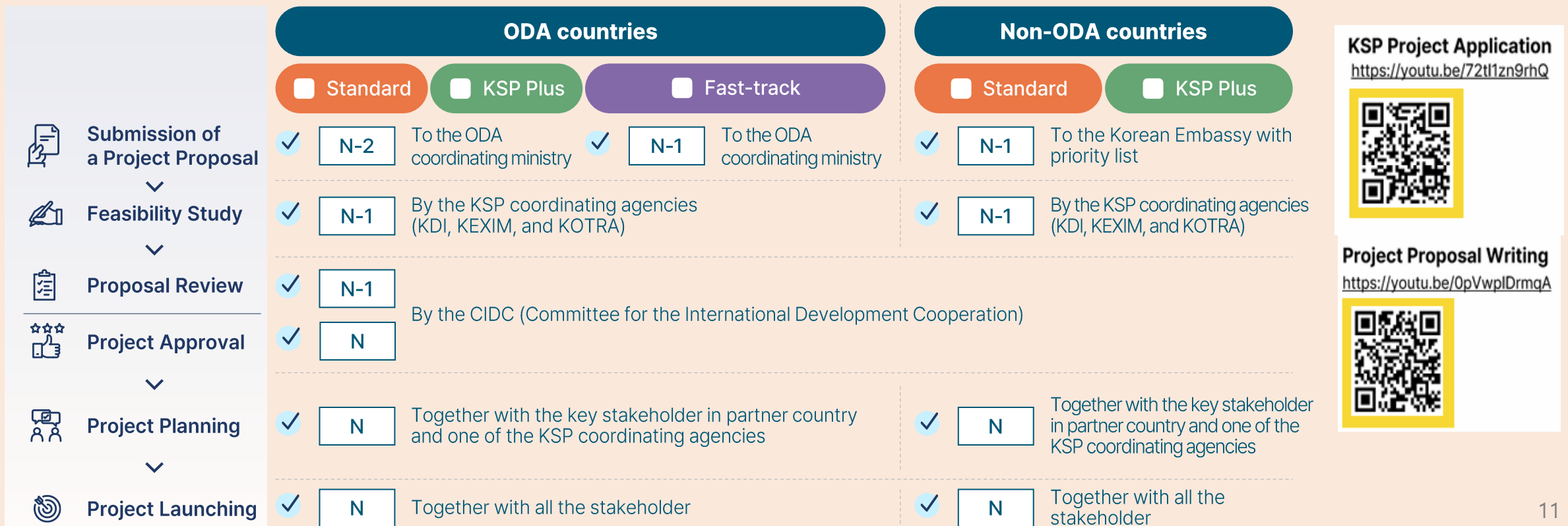


### Global Value Chain

< KSP Projects by sector, 2020-2023 >



KSP projects undergo a rigorous evaluation process after receiving project applications. For ODA-recipient countries, projects are implemented two years after the year of proposal submission, while for non-ODA countries, projects are implemented one year after the year of submission. The same procedure applies to all project types, and if early initiation is needed, it can be requested as a “fast-track” project.





**Thank you  
for your attention.**