

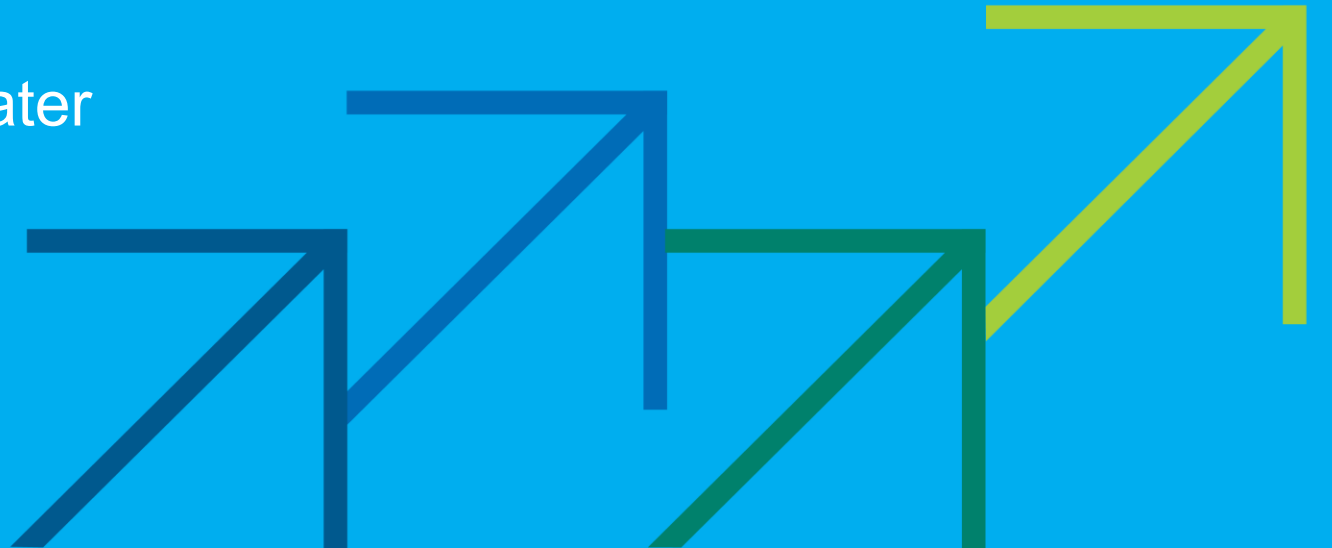
**KGID
2025**

**Green Growth:
The Path to
Sustainable Jobs**

Advantage of Making the First Move

K-water **Strategy**

PyeolNim Park, Senior Manager, K-water



Contents

I K-water's DX and AI Transformation Journey

II **AI First** Strategic Task Force Operation

III K-water AX Vision 2030

IV Ripple Effects of **AI First** Strategy

I

K-water's DX and AI Transformation Journey



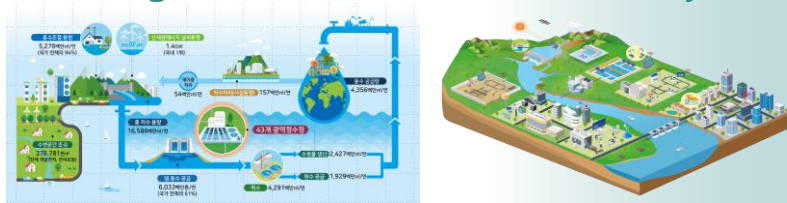
Global water companies are taking action, but K-water is different

Leveraging the world's only end-to-end water management expertise with AI to secure No.1 leadership in the global water industry

Competitive Edge of K-water

Distinctive Business Scope

- National authority responsible for integrated water management across the entire water cycle



Innovation investments with a long-term perspective

Aligned with government AI policies

Achieving economy of scale at the national level

AX Core Assets

- Backed by 60 years of data, know-how, and expert talent from managing 200+ infrastructures



Open Innovation

- Gaining global first-mover advantage via startup partnerships and venture investments



Timely Investment Capability

- Proactive investments aligned with government policies
- * Reflecting mid- to long-term financial plans



Expanding Infrastructure to Fully Implement the AI Strategy

K-water: Driving Continuous Expansion of Proprietary AI Infrastructure through Digital and AI Transformation Expertise

K-water Innovation Center

Board Resolution - '23. 9

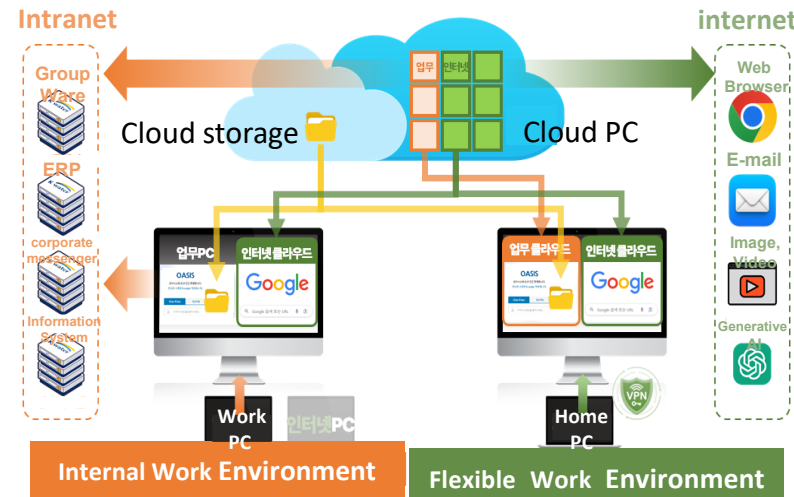
- Establishing and Operating a State-of-the-Art Data Center in Sejong



K-water Smart Work Environment

Board Resolution - '24. 3

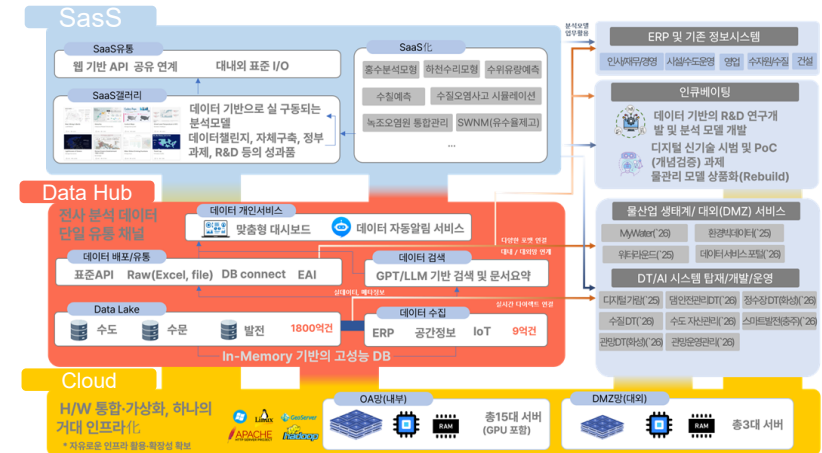
- Implementing Cloud / Mobile Offices



K-water Digital Platform Implementation

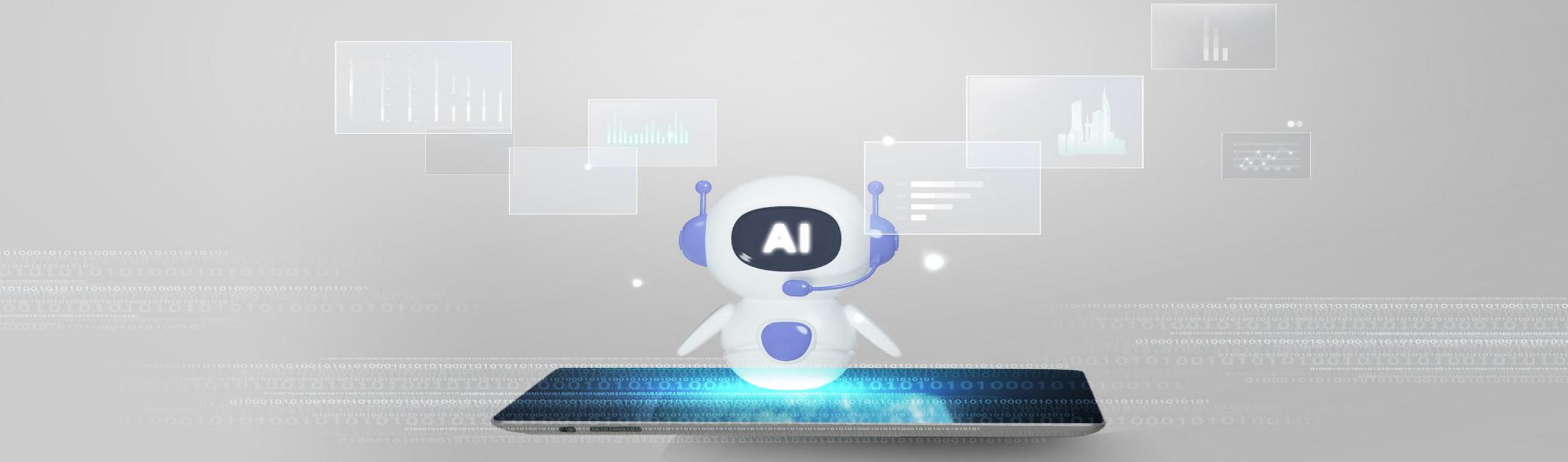
Board Resolution - '24. 8

- Implementing Cloud & Data Hub, Driving SaaS Adoption



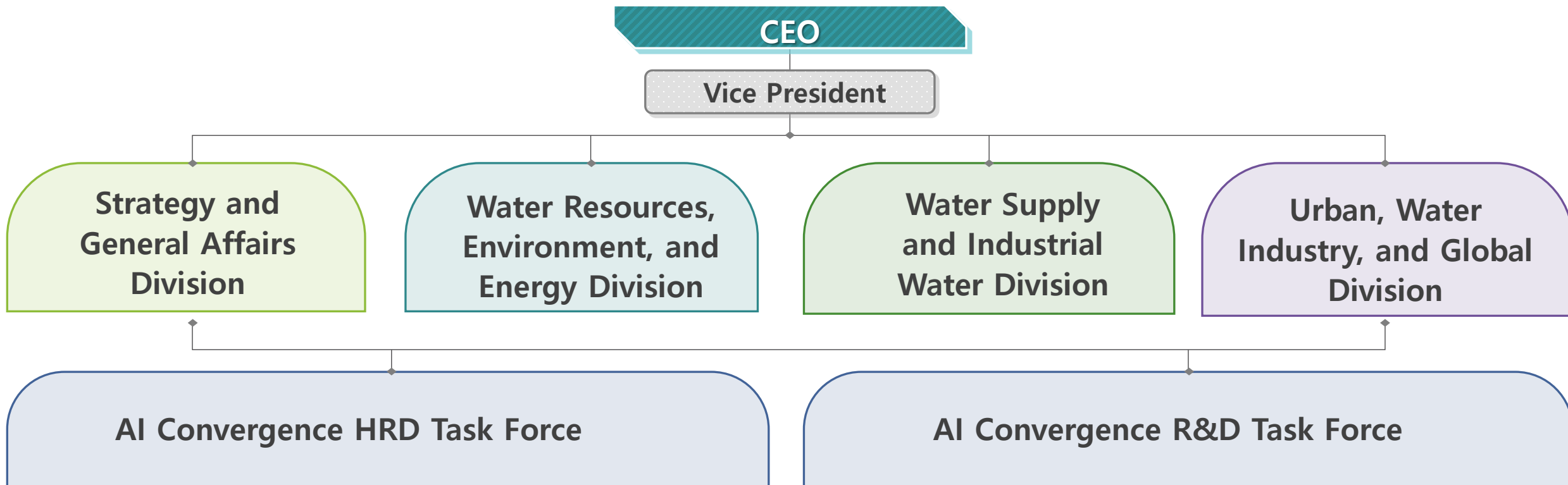
II

AI First Strategic Task Force Operation



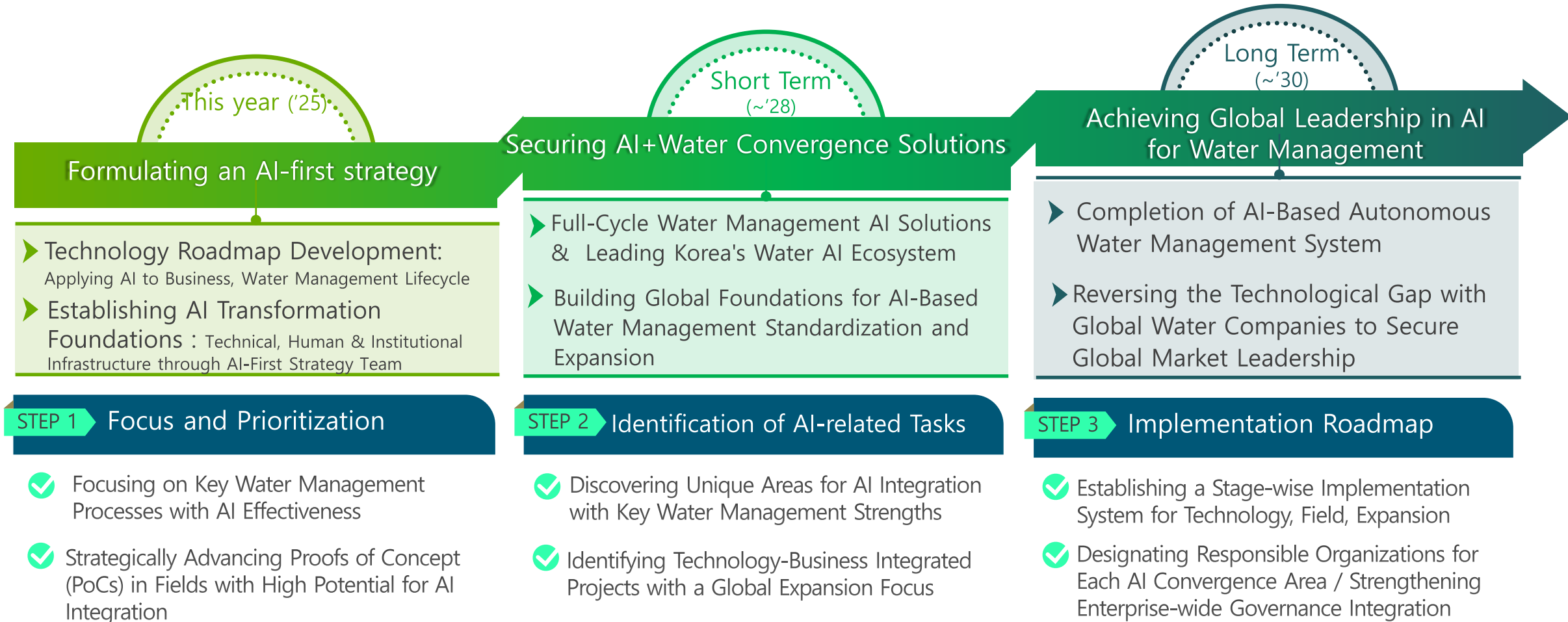
Formation of Task Forces for K-water's Enterprise-wide AI Transformation

AI-Driven Transformation as a Company-wide Challenge Involving Management and Business Changes,
Managed by a CEO-led Planning Committee



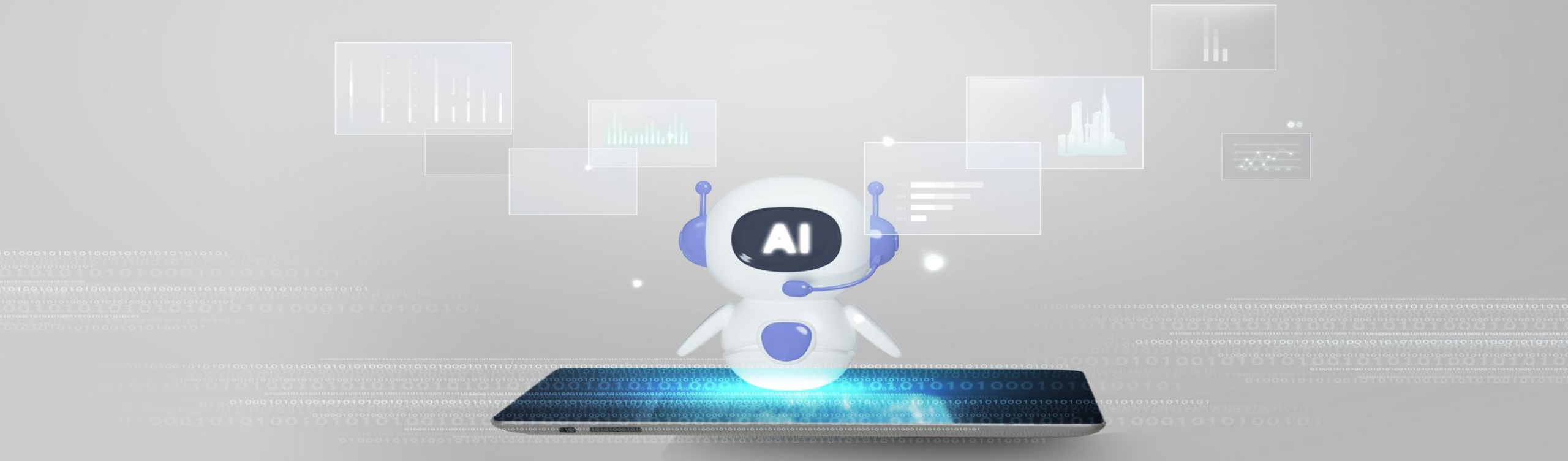
Company-wide Capability Mobilization for K-water's AI Transformation

In order to consolidate dispersed AI integration capabilities and ensure enterprise-wide execution capabilities



III

K-water AX Vision 2030



Compressing 60 Years of Experience into 1 Second

From Infrastructure To Intelligence

01

Revolutionizing the Work Environment

Integrating Distributed Systems and Maximizing Efficiency through AI-Driven Workflows

02

Self-learning and Self-optimizing Facility

Implementation and Expansion of AI Solutions Across the Water Management Lifecycle, Leading the Domestic Water AI Ecosystem

03

Emergence of Collective Intelligence Surpassing Personal Expertise

Transforming Decision-Making with AI
Integration of Organizational Data and Knowledge

① Revolutionizing the Work Environment

Introducing Physical AI, which integrates **AI decision-making** with **on-site operations**, is essential for **driving productivity innovation in water management**

"From Fragmentation to Integration: Transforming the Work Experience with AI"

01

AI Learns Accumulated Work Expertise for Instant Use Through Natural Language Conversations

02

Integrating Disparate Work Systems into a Unified Conversational Platform


03

Intuitively Handling Complex Business Processes Through Question-and-Answer Interactions


Perceived Impact on Employees




Intuitive Communication Innovation
Significantly Reducing Task Processing Time with a Conversational Platform



Instant Access to Information
Manual Search Time Reduced to Zero with an AI-Powered Knowledge Base



One-Stop Task Processing
One-Stop Processing for Complex Processes



Real-Time Response to Updates
A Work Environment That Never Misses Updated Standards and Procedures

② Self-learning and Self-optimizing Facility

" **AI That Learns On-Site Experience** : The Moment Facilities Become Veterans "

01

Intelligent Water Management
Throughout the Entire Cycle, Enabled
by DT-Based Water Management and
Completion of AI-Powered Water
Treatment Plants

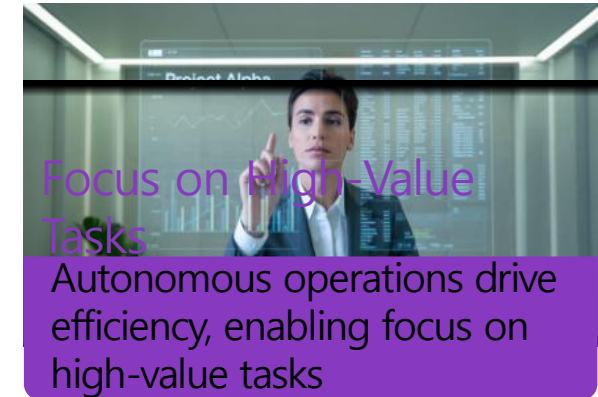
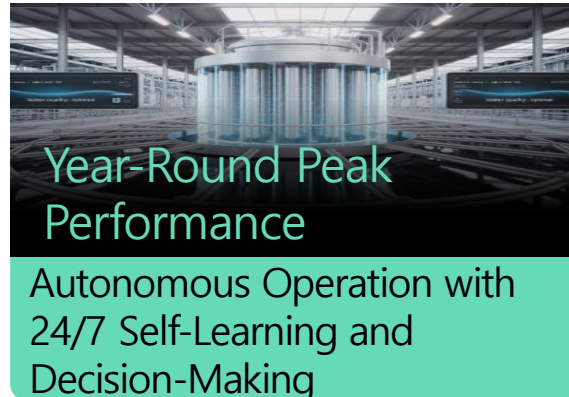
02

Transitioning from Response-Based
to AI-Driven Predictive
Optimization

03

Stepwise Expansion of Unmanned
Autonomous Operations through
Physical AI Sensors and
Automated Control

Perceived Impact on Employees



③ Emergence of Collective Intelligence Surpassing Personal Expertise

" **From Operations to Strategy** : A New Dimension of Employee Capability Expanded by AI "

01

Enterprise-wide Data Literacy Training
Turns Every Employee into an AI
Collaboration Expert

02

Transforming Organizational DNA
from Experience-Based to Data-
Driven Decision-Making

03

Establishing a Data- and AI-Driven
Work Environment from Policy
Planning to Design

Perceived Impact on Employees



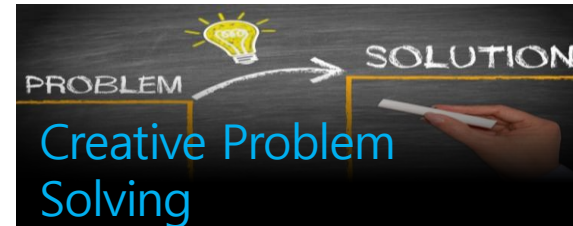
Expansion of Work Scope

Systematic AI Collaboration
Training Expands Employee Roles
and Enhances Capabilities



Policy-Strategy
Alignment

Operational Data Serves as Core
Input for Policy and Strategy
Development



Creative Problem
Solving

Enhancing Creative Problem-
Solving Skills through AI Tools

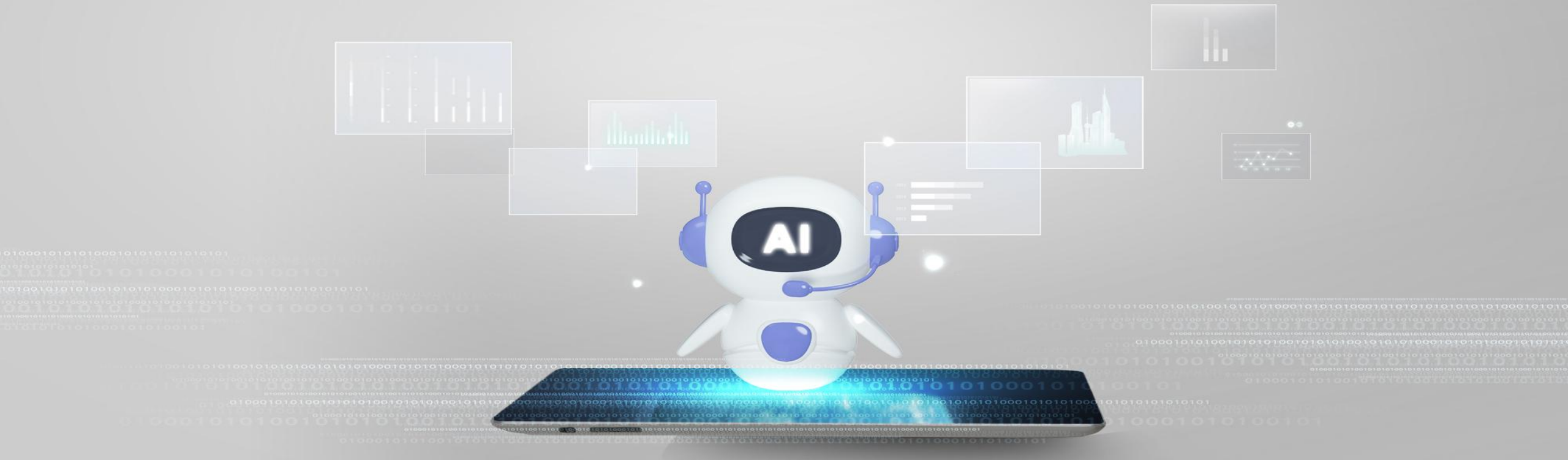


Constructive
Discussion Culture

Establishing a Culture of
Constructive Exchange through
Data-Driven Discussions

IV

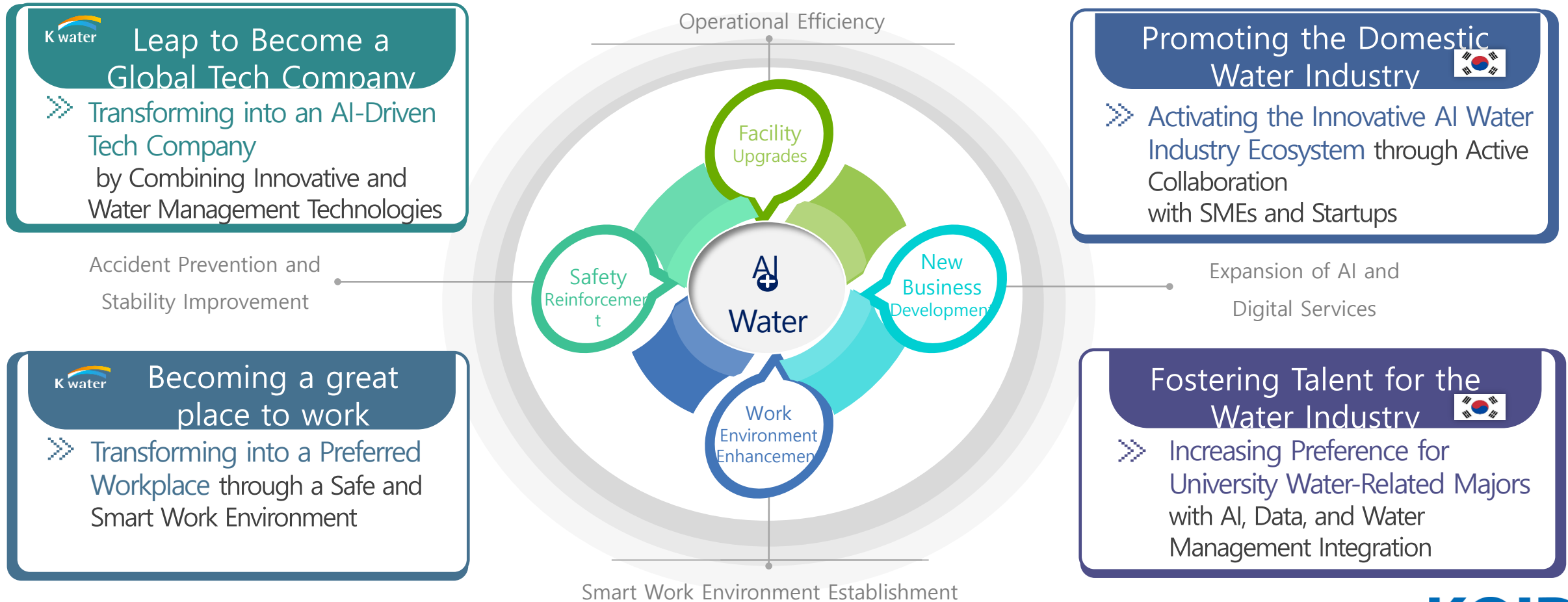
Ripple Effect of K-water AI First Strategy



Ripple Effect of K-water AI First Strategy

Enhancing Employee Work Environments and Facility Safety at the K-water Level

— A Breakthrough Toward **Becoming a Global Tech Company**



Compressing 60 Years of Experience into 1 Second

This is the direction
of innovation chosen
by K-water.

